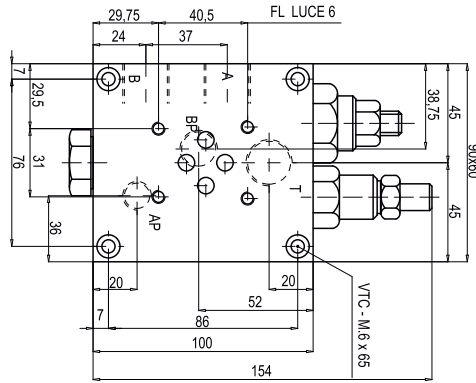
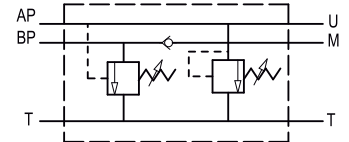


**Two Pump "Hi-Low"
Unloading Valve Flangeable**

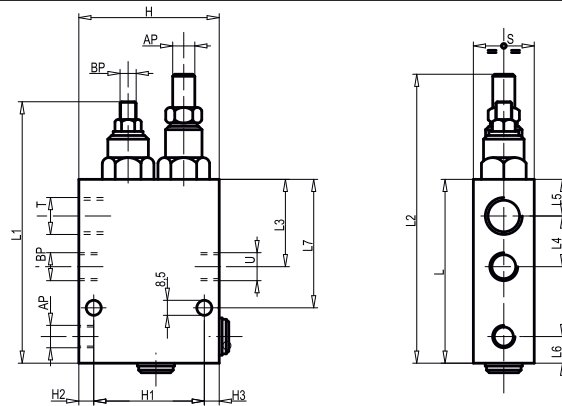


VABP FL...

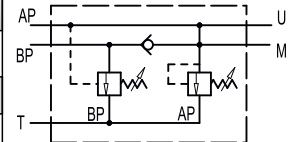
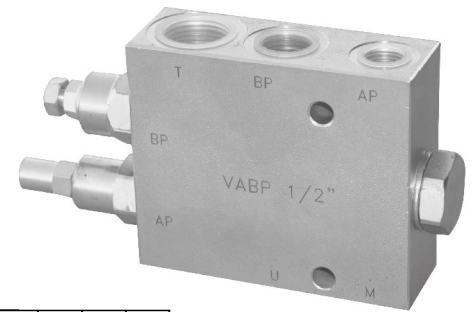


Code Number	Type	Max. Flow	Max. Pressure	A	B	T	AP	BP
		Lt./min	Bar	Gas	Gas	Gas	Gas	Gas
V0518	VABP FL 6	30	350	G 1/2	G 1/2	G 1/2	G 1/4	G 3/8
V0515	VABP FL 10	45	350	G 3/4	G 3/4	G 3/4	G 3/8	G 1/2
V0516	VABP FL 16	80	350	G 1	G 1	G 1	G 1/2	G 3/4

**Two Pump "Hi-Low"
Unloading Valve**

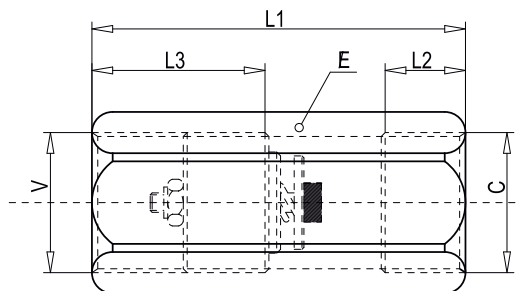


VABP...

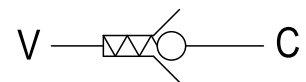
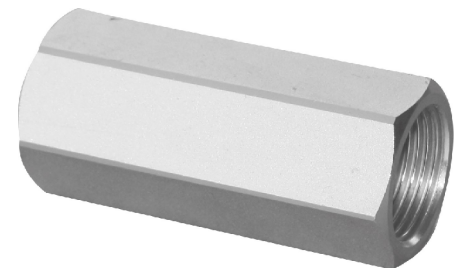


Code Number	Type	Max. Flow	Max. Pressure	L	L1	L2	L3	L4	L5	L6	L7	H1	H2	H3	H	S
		Lt./min	Bar	mm	mm	mm	mm	mm	mm	mm	mm	mm	mm	mm	mm	mm
V0512	VABP 3/8	30	350	100	142	155	50	30	20	13	69	65	8,5	6,5	80	30
V0513	VABP 1/2	45	350	105	147	160	54	36	18	15	73	65	17	8	90	35
V0514	VABP 3/4	80	350	140	187	212	52,5	42,5	20	20	95	65	27	8	100	40

**Hose Burst
Valve Cartridge**



VUBA...



Code Number	Type	Max. Flow	Max. Pressure	L1	L2	L3	E
		Lt./min	Bar	mm	mm	mm	mm
V0771	VUBA 1/4	25	350	50	16	28	19
V0781	VUBA 3/8	50	350	58	17	31	24
V0791	VUBA 1/2	80	350	62	18	33	27
V0801	VUBA 3/4	140	350	75	21	40	32
V0811	VUBA 1	180	350	85	26	43	41