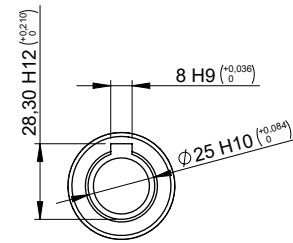
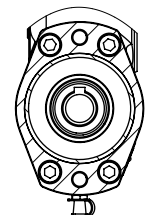


O-ring and Lip seal detail
Scale 1:1



Input shaft detail
Scale 1:2
(both sides)



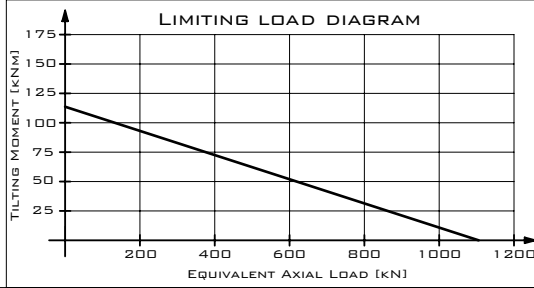
Output shaft detail
Scale 1:3
(Same configuration as Input shaft)

- QPQ hardening treatment applied to outer ring (including teeth)
 - Teeth hardened depth (QPQ) >0.2mm
 - Surface with rust prevention treatment
- Zinc plating treatment applied to the inner ring: ISO 2081; Fe/Zn12C."Blue passivate" post-treatment is also applied to the inner ring.
- Synthetic grease:
 - Grade 2
 - Extreme Pressure conditions
- Slewing Drive working range temperature: -20°C to 70°C
- Ingress protection: IP65
- HNBR Lip seal - resistant to UV light
- Standard paint: For corrosion category PT3 - BLACK RAL 9005

Note: Minimum input torque: 10Nm

MAIN PERFORMANCE PARAMETERS			
GEAR RATIO	103:1	HOLDING TORQUE	55kNm
EFFICIENCY	40%	TILTING MOMENT	111,6kNm
SELF-LOCKING GEAR	YES	RADIAL STATIC LOAD	413kN
BACKLASH CLEARANCE	<0,17°	AXIAL STATIC LOAD	1107kN
MAXIMUM TORQUE	15.600NM	RADIAL DINAMIC LOAD	170kN
NOMINAL TORQUE	14.700NM	AXIAL DINAMIC LOAD	198kN

NOTES: ALL SLEW DRIVE ARE PRE-LUBRICATED. MAXIMUM OUTPUT SPEED 1RPM.
STANDARD PAINT: FOR CORROSION CATEGORY PT3 - BLACK RAL 9005



REV.	DESCRIPTION	DATE	NAME	CHECK
J	BOM update	15/06/21	G.P	T.D
I	BOM Update	15/10/19	M.H	T.D
H	BOM update	10/06/19	G.P	T.D
G2	Parameters update	1/03/19	G.P	T.D
G	Painting update	17/10/18	F.C.	T.D
F	BOM update	12/09/18	D.M.	T.D
...
A	First Design	03/06/15	A.C	T.D

The information contained in this document is property of TGBgroup. It is not allowable any copy or reproduction of this certificated copy with the original not under control. TGBgroup reserve changes of manufacture without previous advice and duty of communication.

Units: mm