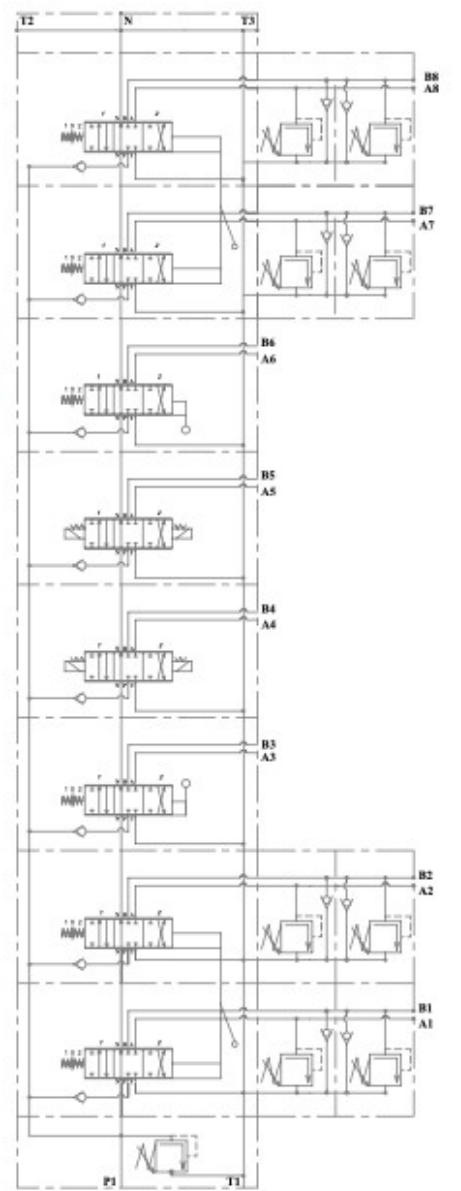


24

Port threads:
 Port P - BSP G 1/2"
 Port A, B - BSP G 1/2"
 Port T2, T3 - BSP G 3/4"
 Port T1 - BSP G 1/2"
 Port N - BSP M26x1,5

Nominal flow rate: 70 l/min
 Operating pressures:
 @ port P - 250 bar
 @ port A, B - 300 bar
 @ port T - 35 bar



8ZC70/N2/{PA1(AzBz)/PA1(AzBz)(Js3533+4)}/PA1KZ01/PAES3/PAES3/PA1KZ01/{PA1(AzBz)/PA1(AzBz)(Js3533+4)}/T2G12-12VDC