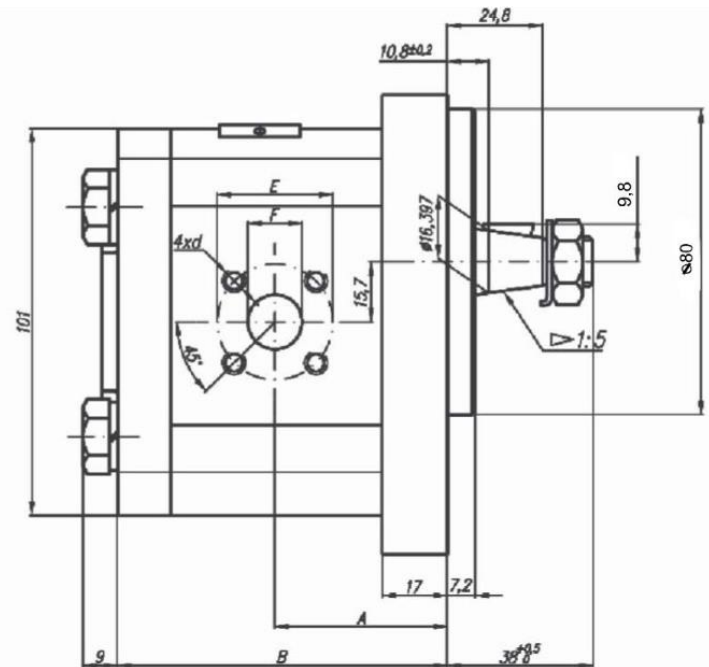
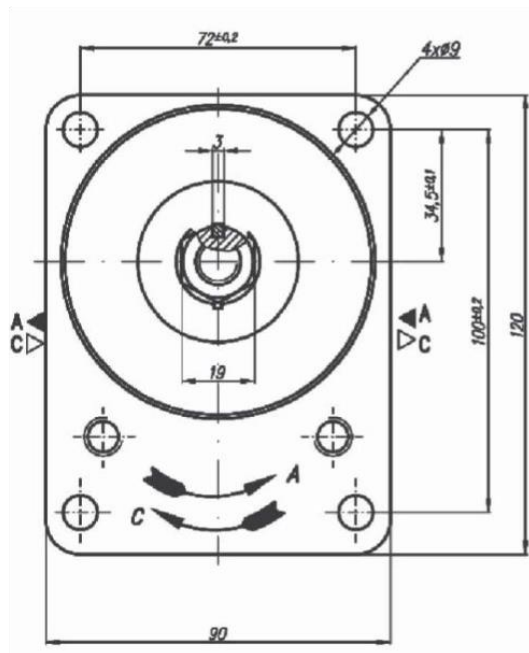


# 20<sup>A</sup><sub>C</sub>...X086



Code	Displacement cm <sup>3</sup> / rev	Flow		Pressure P <sub>nom</sub> bar	Max Speed n rpm	Dimension							
		at 1500 rpm l/min	at max rpm l/min			Inlet		Outlet					
						A mm	B mm	M	G	G1	M	G	G1
20A(C)4,5X086	4.5	6,14	14,33	250	3500	39,8	78	M20-1,5	G1/2	30,2	13,1	M6-6H	
20A(C)6,3X086	6,3	8,69	20,29	250	3500	41	81						
20A(C)8,2X086	8,2	11,32	26,40	250	3500	43,1	83,9						
20A(C)10X086	10	13,95	32,55	250	3500	47,5	87		G3/4				
20A(C)11X086	11,3	15,76	36,78	250	3500	47,5	89						
20A(C)12X086	12	16,92	39,48	250	3500	47,5	90,3						
20A(C)14X086	14	19,95	46,55	250	3500	47,5	93,4						
20A(C)15X086	15	21,60	36,00	250	2500	47,5	95		G1				
20A(C)16X086	16	23,04	38,40	250	2500	47,5	96,5						
20A(C)19X086	19	27,36	45,60	200	2500	47,5	101,5						
20A(C)22X086	22	31,68	42,24	180	2000	55	106,5	14,2					
20A(C)25X086	25	36,00	48,00	160	2000	57,2	111,4						