

Hydrauliekslang  
EN 856 4SN Hose

Staallagen  
4 staallagen

Werkdruk  
350 bar

Barstdruk  
1400 bar

Temperatuur  
-40°C tot +100°C

Buigradius  
300 mm

Binnenmaat  
19 mm

Buitenmaat  
31,5 mm

# 3/4" SLANGEN & KOPPELINGEN SAMENSTELLEN



## 1. KIES LENGTE SLANG(L<sup>1</sup>)

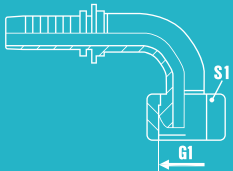
10 CM - 1500 CM

## 2. KIES DE KOPPELINGEN (K<sup>1</sup>) (K<sup>2</sup>)

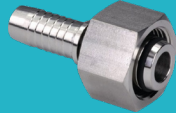
## 3. PLAATS DE BESTELLING OP HYDRAULIEK24.NL



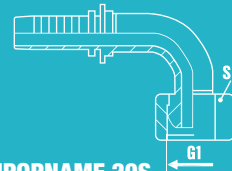
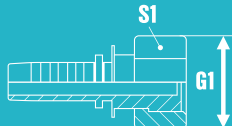
BSP KOPPELING



| Serie                  | S1 | G1   |
|------------------------|----|------|
| Conus 60°              | 32 | 3/4" |
| Bocht 45°<br>Conus 60° | 32 | 3/4" |
| Bocht 90°<br>Conus 60° | 32 | 3/4" |



METRISCHE KOPPELING



### PIJPOPNAMEN 20S

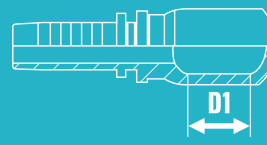
| Serie (met o-ring)     | S1 | G1     |
|------------------------|----|--------|
| Conus 24°              | 36 | M30 x2 |
| Bocht 45°<br>Conus 60° | 36 | M30 x2 |
| Bocht 90°<br>Conus 60° | 36 | M30 x2 |

## HULP NODIG BIJ BESTELLEN ?

Bel +31 (0)53 711 38 61



BANJO KOPPELING



| Serie     | D1   |
|-----------|------|
| Banjo BSP | 3/4" |



BSP BUITENDRAAD



| Serie     | S1 | G1   |
|-----------|----|------|
| Conus 60° | 32 | 3/4" |



METRISCH BUITENDRAAD

| Serie     | S1 | G1     |
|-----------|----|--------|
| Conus 24° | 32 | M30 x2 |

