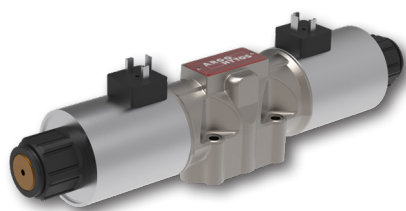


4/2 and 4/3 Directional Control Valve, Solenoid Operated

RPE4-10

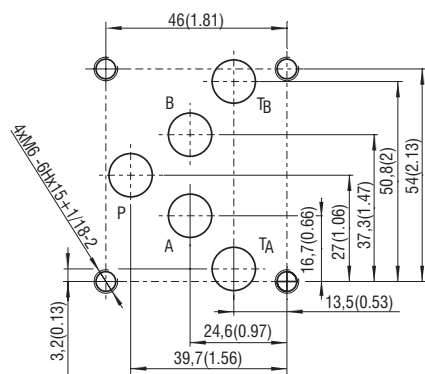
Size 10 (D05) • Q_{max} 140 l/min (37 GPM) • p_{max} 350 bar (5100 PSI)



Technical Features

- › Direct acting directional control valve with subplate mounting interface acc. to ISO 4401, DIN 24340 (CETOP 05)
- › High transmitted hydraulic power up to 350 bar with optimized design to minimize pressure drop
- › Five chamber housing design with reduced hydraulic power dependence on fluid viscosity
- › The valve is available with interchangeable DC solenoids, also for AC power supply using a built-in rectifier bridge
- › Wide range of solenoid electrical terminal versions available
- › Wide range of interchangeable spools and manual overrides available
- › Inductive contactless Normally Open and Normally Closed spool position sensor option
- › Soft-shift spool speed control option
- › The coil is fastened to the core tube with a retaining nut and can be rotated by 90° to suit the available space.
- › In the standard version, the valve housing is phosphated and steel parts zinc-coated for 240 h salt spray protection acc. to ISO 9227. Enhanced surface protection for mobile sector available (ISO 9227, 520 h salt spray)

ISO 4401-05-04-0-05



Ports P, A, B, T - max \varnothing 11.2 mm (0.44 in)

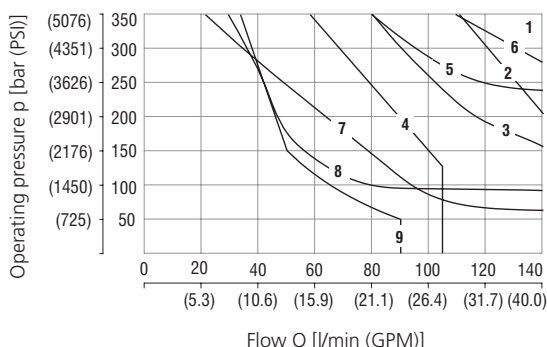
Technical Data

| Valve size | | 10 (D05) |
|---|--------------------------|--------------------------------------|
| Max. flow | l/min (GPM) | 140 (37) |
| Max. operating pressure at ports P, A, B | bar (PSI) | standard 350 (5080) |
| Max. operating pressure at port T | bar (PSI) | 210 (3050) |
| Fluid temperature range (NBR) | °C (°F) | -30 ... +80 (-22 ... +176) |
| Fluid temperature range (FPM) | °C (°F) | -20 ... +80 (-4 ... +176) |
| Ambient temperature range | °C (°F) | -30 ... +50 (-22 ... +122) |
| Supply voltage tolerance | % | AC: \pm 10 DC: \pm 10 |
| Max. switching frequency | 1/h | 15 000 |
| Switching time at $v=32$ mm ² /s (156 SUS) | ON | ms |
| | OFF | ms |
| Enclosure type acc. to EN 60529 | | IP65 / IP67 (see Dimensions, page 3) |
| Weight | - valve with 1 solenoid | kg (lbs) |
| | - valve with 2 solenoids | kg (lbs) |
| | Datasheet | Type |
| General information | GI_0060 | Products and operating conditions |
| Coil types / connectors | C_8007 / K_8008 | C31* / K* |
| Mounting interface | SMT_0019 | Size 10 |
| Spare parts | SP_8010 | |

Characteristics measured at $v = 32$ mm²/s (156 SUS)

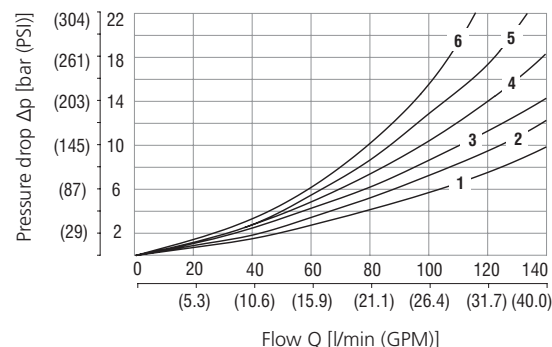
Operating limits

Operating limits for maximum hydraulic power at rated temperature and supply voltage equal to 90% nominal.



| Spool symbol | 1 | J15, J75 | 6 |
|------------------------------|---|----------|---|
| Z11, Z51, H11, H51, P11, P51 | 1 | J15, J75 | 6 |
| R11, X11, R21 | 2 | L21 | 7 |
| C11, C51 | 3 | A51 | 8 |
| B11, B51 | 4 | C21 | 9 |
| Y11, Y51 | 5 | | |

Pressure drop related to flow rate



| Spool symbol | P-A | P-B | A-T | B-T | P-T | P-A | P-B | A-T | B-T | P-T |
|------------------------------|-----|-----|-----|-----|-----|-----|-----|-----|-----|-----|
| Z11, P11, Y11, R11, X11, B11 | 1 | 1 | 2 | 2 | | C11 | 4 | 3 | 4 | 5 |
| Z51, Y51, B51 | | 1 | 2 | | | C51 | 4 | | 5 | 1 |
| H11 | 1 | 1 | 2 | 2 | 1 | L21 | 1 | 1 | 1 | 2 |
| H51 | | 1 | 2 | | 1 | R21 | 1 | 1 | 1 | 3 |
| P51 | | 1 | 2 | | | J15 | 1 | 1 | 2 | 3 |
| J75, A51 | 1 | 1 | | | | C21 | 6 | 6 | 6 | 4 |

For operating limits under conditions and flow directions other than shown contact our technical support. Admissible operating limits may be considerably lower with only one direction of flow (A or B plugged, or without flow.)

Ordering Code
RPE4 - 10 [] [] / [] [] [] [] [] [] - []

4/2 and 4/3 directional control valve, solenoid operated
Valve size
Number of spool positions

 two positions 2
 three positions 3
Spool symbols

see the table "Spool Symbols"

Rated supply voltage of solenoids

(at the coil terminals)

| | |
|--------------------------------|--------------|
| 12 V DC / 3.17 A | 01200 |
| 24 V DC / 1.73 A | 02400 |
| 27 V DC / 1.52 A | 02700 |
| 205 V DC / 0.20 A | 20500 |
| 120 V AC / 0.38 A / 60 Hz | 12060 |
| 230 V AC / 0.20 A / 50 (60) Hz | 23050 |

Connector

| | |
|--|-------------|
| EN 175301-803-A | E1 |
| E1 with quenching diode | E2 |
| AMP Junior Timer - radial direction (2 pins; male) | E3 |
| E3 with quenching diode | E4 |
| EN 175301-803-A with integrated rectifier | E5 |
| Deutsch DT04-2P - axial direction (2 pins; male) | E12A |
| E12A with quenching diode | E13A |

- For directional valves with two solenoids, one solenoid must be de-energized before the other solenoid can be charged.
- For AC voltage supply use coils with connector type E5.
- For other solenoid voltage supply options see datasheet C_8007.
- The solenoid operated valves are delivered without connectors. For available connectors see datasheet K_8008.

No designation

| | |
|----------|--|
| A | zinc-coated (ZnCr-3), ISO 9227 (240 h) |
| B | zinc-coated (ZnNi), ISO 9227 (520 h) |

Surface treatment

standard

No designation
S1
S4
Spool monitoring

 without sensors
 normally-open sensor
 normally-closed sensor

No designation
V
Seals

 NBR
 FPM (Viton)

No designation
T0
T2
T3
Soft-shift spool speed control

 without soft-shift control
 with plugged cavity for optional soft shift installation
 orifice Ø0.6 mm (0.02 inch) in T line bridge
 adjustable needle valve in T line bridge

No designation
N1
N2
N4
N5
N9
Manual override

 standard
 cap nut covered
 rubber boot protected
 hand screw
 socket head screw
 without manual override

- The orifice to the P port can be ordered separately, see datasheet SP_8010.
- Mounting bolts M6 x 45 DIN 912-10.9 or studs must be ordered separately. Tightening torque is 14+1 Nm (10.3+0.7 lbf.ft).
- Besides the commonly used valve versions shown other special models are available. Contact our technical support for their identification, feasibility and operating limits. versions are available: consult our technical department for their identification, feasibility and operating limits.

Spool Symbols

| Type | Symbol | Interposition | Type | Symbol | Interposition |
|------|--------|---------------|------|--------|---------------|
| Z11 | | | P51 | | |
| C11 | | | Y51 | | |
| H11 | | | C51 | | |
| P11 | | | Z51 | | |
| Y11 | | | B51 | | |
| L21 | | | H51 | | |
| B11 | | | X11 | | |
| C21 | | | C11 | | |
| R11 | | | H11 | | |
| R21 | | | J15 | | |
| A51 | | | J75 | | |

Type of Solenoid Coil in millimeters (inches)

| E1, E2 Protection degree IP65 | E3, E4 Protection degree IP65 | E5 Protection degree IP65 | E12A, E13A Protection IP67 / IP69K |
|----------------------------------|----------------------------------|------------------------------|---------------------------------------|
| | | | |

The indicated IP protection level is only achieved if the connector is properly mounted.

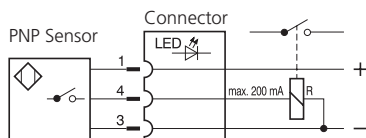
Manual Override in millimeters (inches)

| No designation - standard | Designation N1 - cap nut covered | Designation N2 - rubber boot protected | Designation N4 - hand screw | Designation N5 - socket head screw size 3 | Designation N9 - without manual override |
|------------------------------|-------------------------------------|---|--------------------------------|--|---|
| | | | | | |

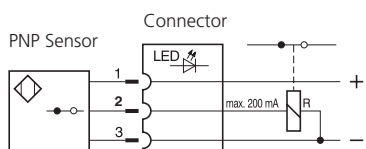
In case of solenoid malfunction or power failure, the spool of the valve can be shifted by manual override as long as the pressure in port T does not exceed 25 bar (363 PSI). For alternative manual overrides contact our technical support.

Spool Position Sensor

S1 - Circuit diagram of the normally - **OPEN** sensor



S4 - Circuit diagram of the normally - **CLOSED** sensor



Function of the position sensor:

In the basic position (when the solenoid is switched off), a steel core, connected to the spool, is under the position sensor. The sensor is activated, it means contacts of the sensor S1 are closed and contacts of the sensor S4 are open. After switching on the solenoid the spool with core moves out of the sensor range and the sensor is deactivated.

| Technical Data of the Sensor | | S1, S4 |
|--|-----------|----------------------------|
| Rated power supply voltage | V | 24 DC |
| Power supply voltage range | V | 10 ... 30 DC |
| Rated current | mA | 200 |
| Sensor enclosure protection (EN 60529) | | IP67 |
| Max. operating pressure | bar (PSI) | 210 (3046) |
| Switching frequency | Hz | 1000 |
| Ambient temperature range | °C (°F) | -25 ... +80 (-13 ... +176) |
| Technical Data of the Connector | | |
| Power supply voltage range | V | 10 ... 30 DC |
| Ambient temperature range | °C (°F) | -25 ... +80 (-13 ... +176) |
| Indicator | | yellow LED |

Typical configurations of the valve with a sensor:

3-position valve with two solenoids, equipped with two sensors

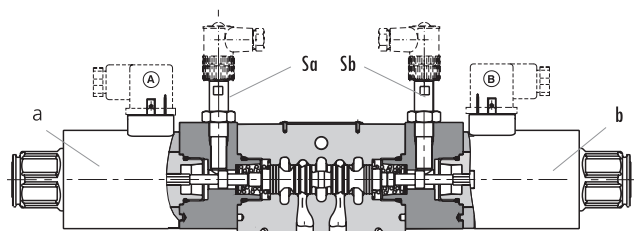
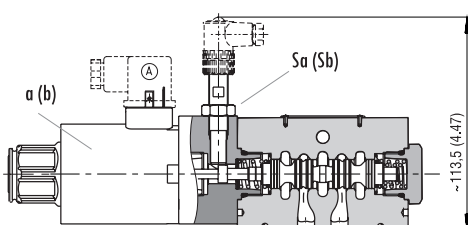
2-position valve with one solenoid, equipped with one sensor on the solenoid side

2-position valve with a detent assembly of spool, equipped with one sensor on the side of the solenoid which moves the spool from the basic position to the switched position according to the spool symbol

Note: the sensor always indicates the change of spool position realised by the energised solenoid, mounted on the side of the sensor.

| Signal of solenoid Signal of sensor | Two-Position Directional Control Valve | | | |
|--|--|----------|-----|-----|
| | ① a(b) | ③ Sa(Sb) | LED | |
| | S1 | S4 | S1 | S4 |
| 0 | 1 | 0 | ON | OFF |
| 1 | 0 | 1 | OFF | ON |

| Signal of solenoid Signal of sensor | Three-Position Directional Control Valve | | | | | | | | | |
|--|--|---|----------|----|-----|----|----------|----------|----------|----------|
| | ① a(b) | | ③ Sa(Sb) | | LED | | | | | |
| | a | b | Sa | Sb | Sa | Sb | Sa - LED | Sb - LED | Sa - LED | Sb - LED |
| 0 | 0 | 1 | 1 | 0 | 0 | 0 | ON | ON | OFF | OFF |
| 1 | 0 | 0 | 1 | 1 | 0 | 0 | OFF | ON | ON | OFF |
| 0 | 1 | 1 | 0 | 0 | 1 | 1 | ON | OFF | OFF | ON |



Spool Speed Control in millimeters (inches)

| Designation T0 - Plug VSTI M10x1 | Designation T2 - Orifice $\varnothing 0.6$ (0.02) | Designation T3 - Needle valve |
|----------------------------------|---|-------------------------------|
| | | |

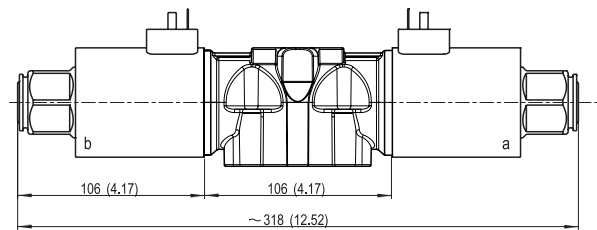
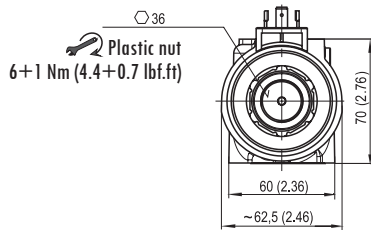
| | | | |
|--|---------------------------|--|---|
| Plugged cavity for optional soft-shift control devices installation (T2, T3) | Switching time ON and OFF | The orifice extends the valve shifting time. | The needle valve allows continuous adjustment of the shifting time. |
| | | 120 ... 350 ms | 30 ... 2000 ms |

The switching times shown are valid for viscosity $\nu = 32 \text{ mm}^2/\text{s}$ (156 SUS) and nominal voltage. They depend on working pressure and flow rate of the directional control valve.

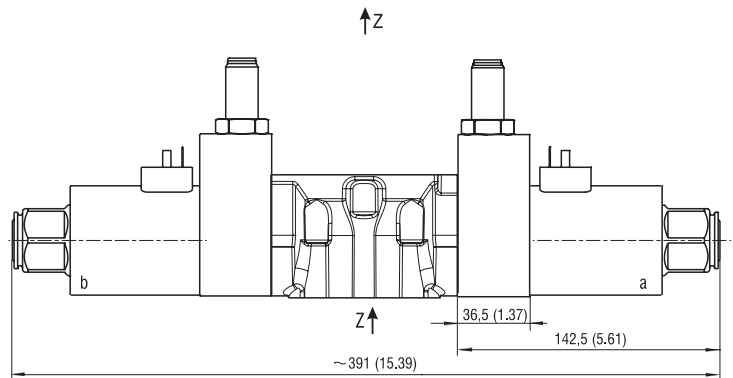
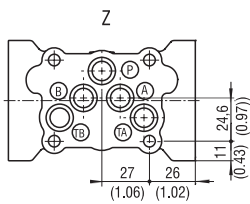
Dimensions in millimeters (inches)

Valve with two solenoids

RPE4-103*/*E1

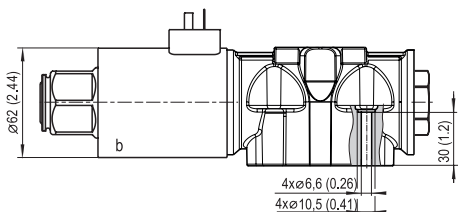


RPE4-103*/*E1*S



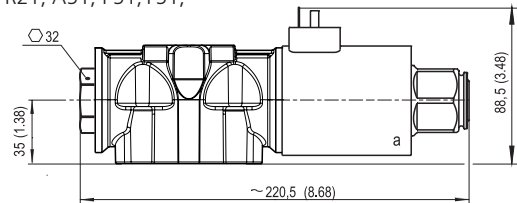
Valve with one solenoid „b”

Spool symbols X11, C11, H11

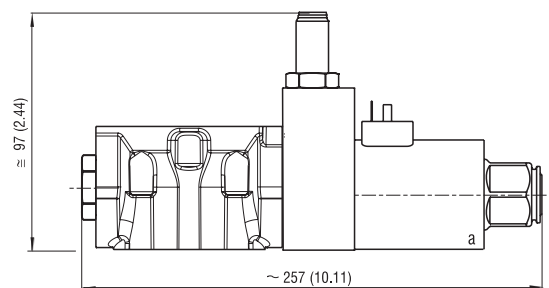
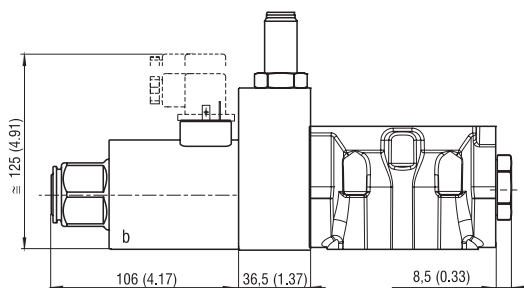


Valve with one solenoid „a”

Spool symbols R11, R21, A51, P51, Y51, C51, B51, Z51, H51



RPE4-102*/*E1*S



0,01/100 mm
 $R_{0.8}$ (Rmax. 6,3)
 Required surface quality of the counterpart

Mounting screws 14+1 Nm (10.3+0.7 lbf.ft)
 M6 x 45 DIN 912-10.9