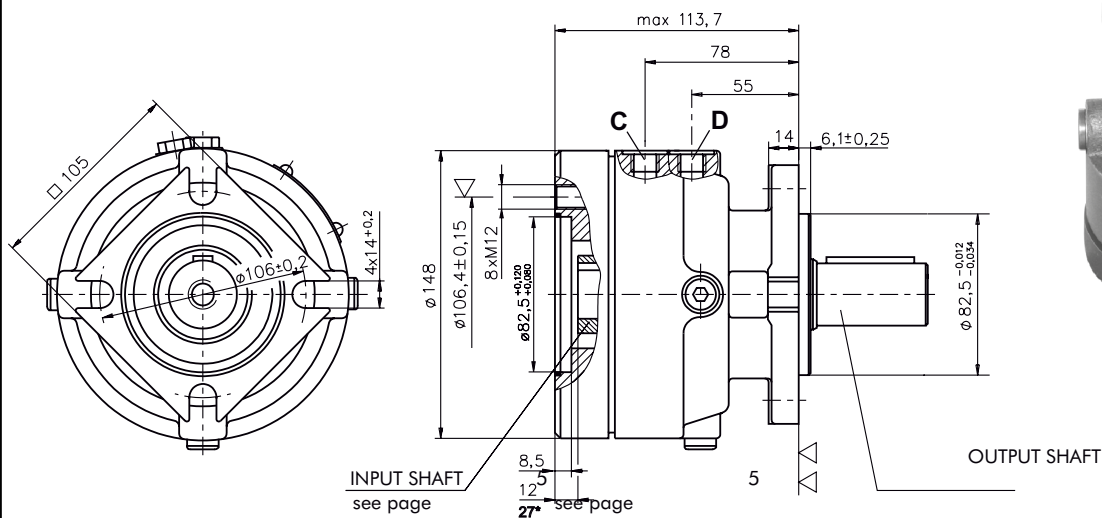
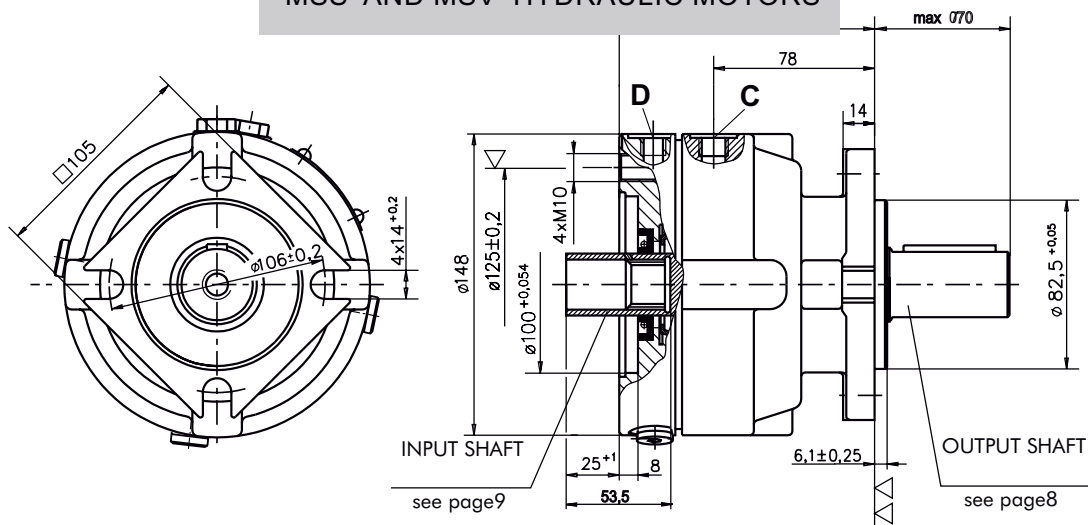


**TYPE LB/288**  
**MP, MR AND MS HYDRAULIC MOTORS**



**TYPE LBS/289**  
**MSS AND MSV HYDRAULIC MOTORS**



**C** : Brake release Port -G $\frac{1}{4}$ , 9mm depth

**D** : Drainage tap -G $\frac{1}{4}$ , 9mm depth

▽ - Place for attachment  
(tightening torque for bolts M12x30-8.8 DIN931-7daNm)

▽▽ - Place for attachment

\* -For Input Shaft Hole Versions SH and SB

**SPECIFICATION DATA**

Description	LB/288...	7	14	21	32	43	63
*Min. Static Torque [daNm]		6-8	13-15	20-22	31-34	41-45	61-64
Opening Pressure min		4-8	9-16	17-23			
[bar] max		300					
Min. oil quantity for brake releasing [cm <sup>3</sup> ]		7-8					
Oil volume [cm <sup>3</sup> ]		50-120					
Max. Pressure in drain space [bar]		0,5					
Weight		9					