

**ORDER CODE**

	1	2	3	4	5	6	7
MH							

**Pos. 1 Displacement code**

200	- 201,3 cm <sup>3</sup> /rev
250	- 252,0 cm <sup>3</sup> /rev
315	- 314,9 cm <sup>3</sup> /rev
400	- 396,8 cm <sup>3</sup> /rev
500	- 502,4 cm <sup>3</sup> /rev

**Pos. 2 Shaft Extensions\***

C	- ø32 straight, Parallelkey A10x8x45 DIN6885
SH	- ø1¼" splined 14T ANSIB92.1-1970
CB**	- ø35 straight, Parallelkey A10x8x45 DIN6885
K	- ø 35 tapered 1:10, Paralelkey B6x6x20x DIN6885

**Pos. 3 Shaft Seal Version**

omit	- Standard shaft seal
U	- High pressure shaft seal (without check valves)

**Pos. 4 Drain Port**

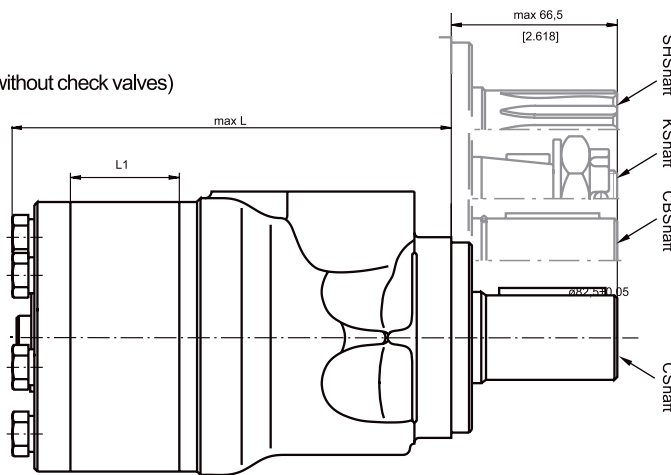
omit	- with drain port
1	- without drain port

**Pos. 5 Ports**

omit	- BSPP (ISO228)
M	- Metric (ISO262)

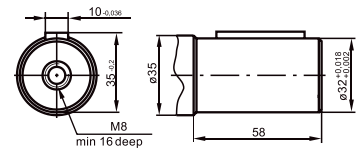
**Pos. 6 Special Features**

Pos. 7	- Design Series
omit	- Factory specified

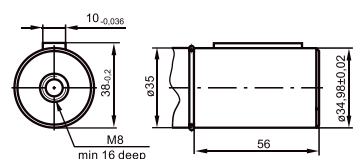


**SHAFT EXTENSIONS**

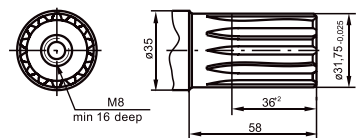
**C** - ø32 straight, Parallelkey A10x8x45 DIN6885  
Max. Torque 77daNm



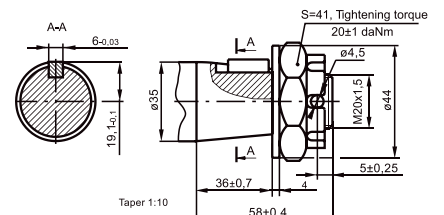
**CB** - ø35 straight, Parallelkey A10x8x45 DIN6885  
Max. Torque 95daNm



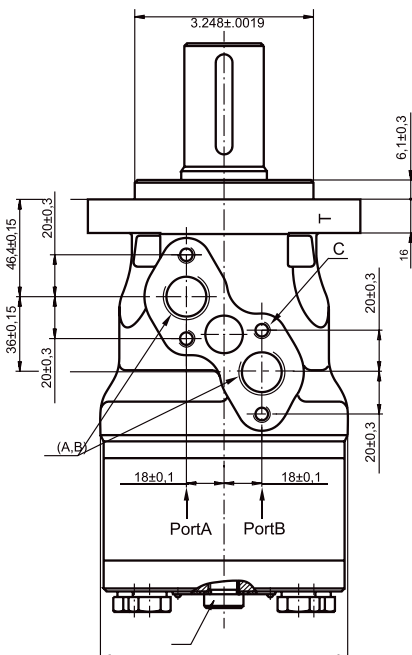
**SH** - ø1¼" splined 14T, DP12/24 ANSI B92.1-1976  
Max. Torque 95daNm



**K** - tapered 1:10, Parallelkey B6x6x20 DIN6885  
Max. Torque 95daNm

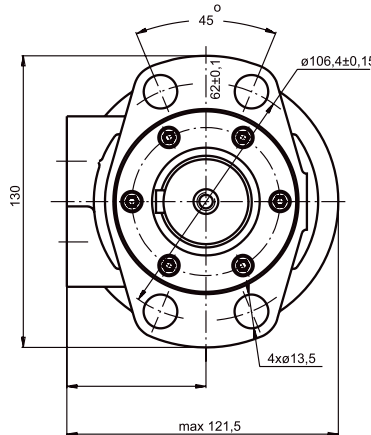


**PORTING**



**C** : 4x M8 - 13 mm depth  
**P<sub>(A,B)</sub>** : 2x G1/2 or 2x M22x1,5-15mm depth  
**T** : G1/4 or M14x1,5-12mm depth (plugged)

**MOUNTING**



Type	L,mm	L <sub>1</sub> ,mm
MH 200	169	27,8
MH 250	176	34,8
MH 315	184	43,5
MH 400	196	54,8
MH 500	211	69,4

**SPECIFICATION DATA**

Type	MH 200	MH 250	MH 315 C	MH 315 SH,K	MH 400C	MH 400SH,K	MH 500C	MH 500SH,K
Displacement (cm <sup>3</sup> /rev.)	201.3	252	314.9	314.9	396.8	396.8	502.4	502.4
Max. Speed (RPM)	cont.	370	295	235	235	185	185	150
	int.*	445	350	285	285	225	225	180
Max. Torque (daNm)	cont.	51	61	59	74	59	84	58
	int.*	58	70	67	82	70	98	68
	peak**	64	79	84	98	84	109	84
Max. Output (kW)	cont.	16	16	12.5	14	10	12.5	8.5
	int.*	18.5	18.5	14	15.5	12	15	10
Max. Pressure Drop (bar)	cont.	175	175	135	175	105	155	90
	int.*	200	200	155	200	125	190	95
	peak**	225	225	190	205	155	210	120
Max. Oil Flow (l/min)	cont.	75	75	75	75	75	76	76
	int.*	90	90	90	90	90	90	90
Max. Inlet Pressure (bar)	cont.	200	200	200	200	200	200	200
	int.*	225	225	225	225	225	225	225
	peak**	250	250	250	250	250	250	250
Max. Return Pressure w/o Drain Line or Max. Pressure in Drain (bar)	cont. 0-100 RPM	75	75	75	75	75	75	75
	cont. 100-200 RPM	40	40	40	40	40	40	40
	cont. 200-300 RPM	20	20	20	20	20	20	20
	int.* 0 - max.RPM	75	75	75	75	75	75	75
Max. Starting Pressure with Unloaded Shaft, (bar)	5	5	5	5	5	5	5	5
Min Starting Torque (daNm)	at max. press. drop. cont.	39	52	51	66	49	72	49
	at max. press. drop. Int.*	75	59	59	73	60	88	60
Min. Speed***, (RPM)	10	10	8	8	5	5	5	5
Weight, agv. (kg)	10.5	11	11.5	11.5	12.3	12.3	13	13

\* Intermittent operation: The permissible values may occur for max. 10% of every minute.

\*\* Peak load: The permissible values may occur for max. 1% of every minute.

\*\*\* For speed of 5 RPM lower than even, consult factory or your regional manager.

1) Intermittent speed and Intermittent pressure must not occur simultaneously.

2) Recommended filtration is per ISO clean lines code 20/16. A nominal filtration of 25 micron or better.

3) Recommend using a premium quality, anti-wear type mineral based hydraulic oil, HLP (DIN51524) or HM (ISO 6743/4) if using synthetic fluids consult the factory for alternative seal materials.

4) Recommended minimum oil viscosity 13 mm<sup>2</sup>/s at 50 C.

5) Recommended maximum system operation temperature is 82 C

6) To assure optimum motor life fill with fluid prior to load and run at moderate load and speed

for 10-15 minutes.