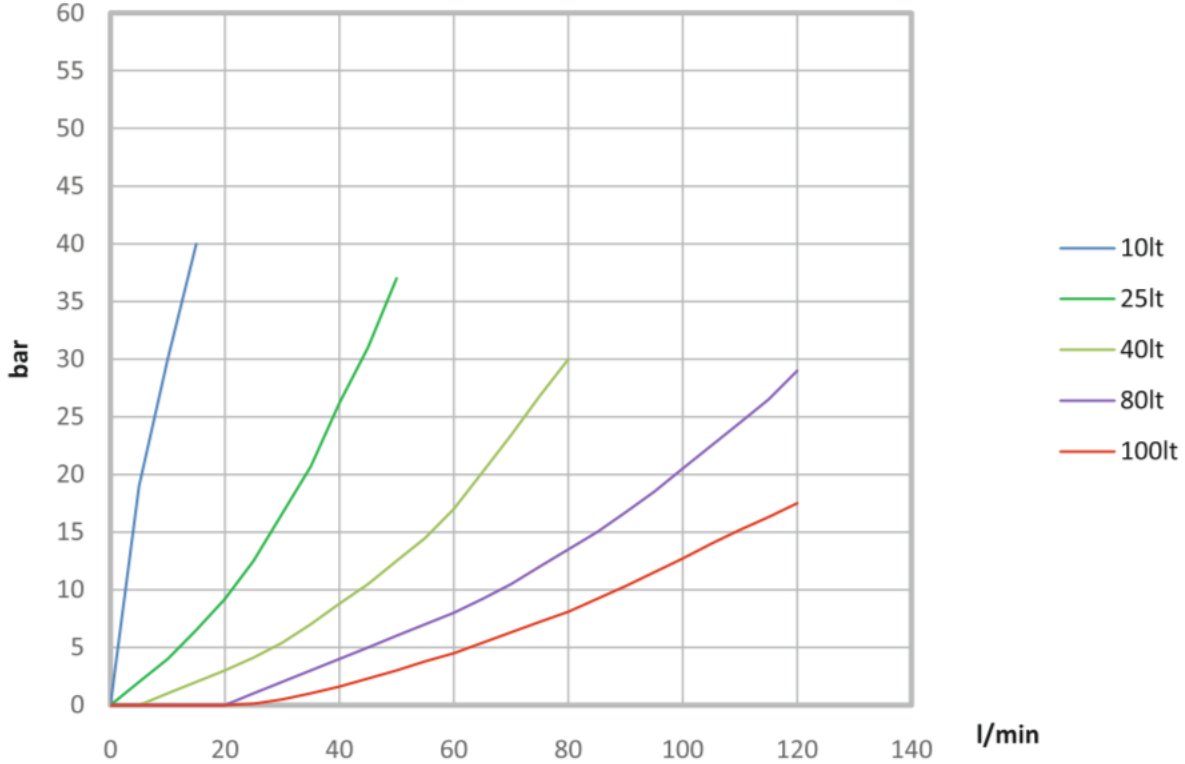


A/B – T Pressure Drop



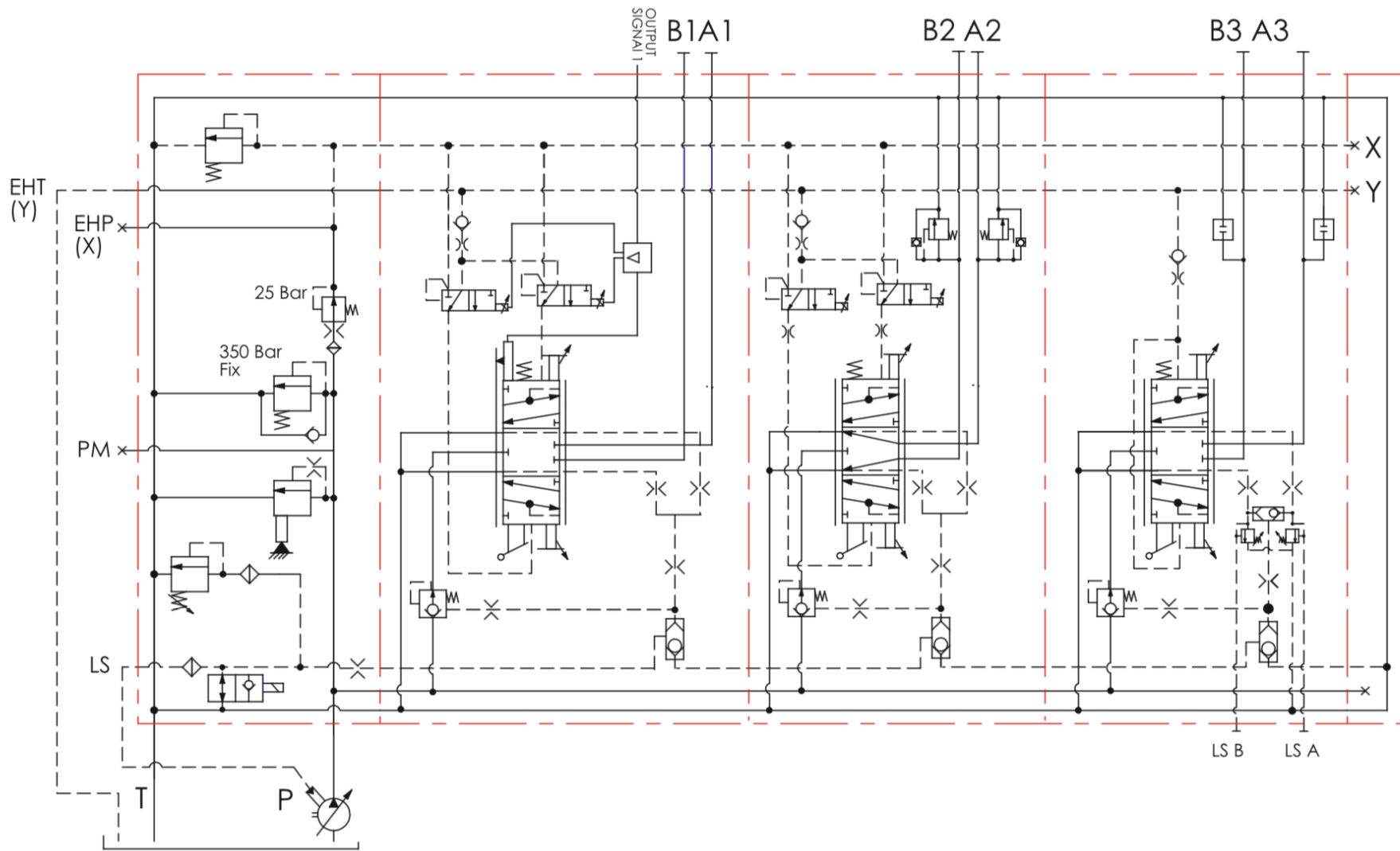
Technical Specifications

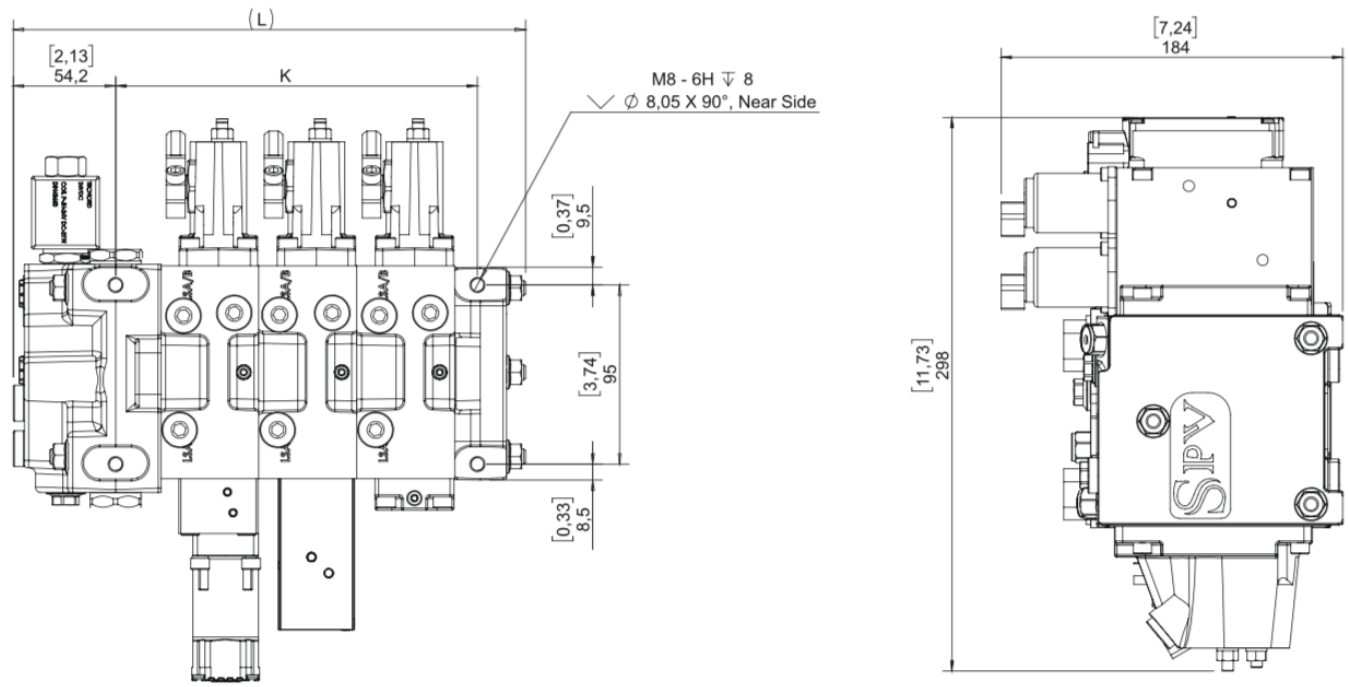
Number of Spools		1-12	
Nominal Flow on Inlet		150 l/min	40 US gpm
Nominal Flow on Ports	Compensated	125 l/min	33 US gpm
	Not Compensated	140 l/min	37 US gpm
Maximum Working Pressure	Port P, A/B Continuous	350 bar	5000 psi
	Port A/B	420 bar	6100 psi
	Port LS	350 bar	5000 psi
Maximum Back Pressure on T Port		10 bar	150 psi
Maximum Internal Leakage (100 Bar; 32 cSt, 40°C)	Without Shock Valves	12cc (100 Bar; 32 cSt, 40°C)	0,73 in ³ /m (1450 psi; 32 cSt, 104°F)
	With Shock Valves	15cc (100 Bar; 32 cSt, 40°C)	0,92 in ³ /m (1450 psi; 32 cSt, 104°F)
Spool Travel	Spool Travel	± 7,0 mm	
	Dead Band	± 1,5 mm	
	Proportional Range	± 5,5 mm	

For other operating conditions please contact to our Sales Department.

Standard & Optional Threads

<i>Thread</i>	<i>Code</i>	<i>P</i>	<i>A/B</i>	<i>T</i>	<i>LSA/LSB</i>	<i>PM / EHP / EHT</i>
<i>BSP</i>	<i>B</i>	<i>G 3/4"</i>	<i>G 1/2"</i>	<i>G 3/4"</i>	<i>G 1/4"</i>	<i>G 1/4"</i>





Type	K		L	
	mm	inch	mm	inch
SPV121	88	3,46	167,7	6,60
SPV122	140	5,51	219,7	8,64
SPV123	192	7,55	271,7	10,69
SPV124	244	9,60	323,7	12,74
SPV125	296	11,65	375,7	14,79
SPV126	348	13,70	427,7	16,83
SPV127	400	15,74	479,7	18,88
SVP128	452	17,79	531,7	20,93
SPV129	504	19,84	583,7	22,98
SPV1210	556	21,88	635,7	25,02