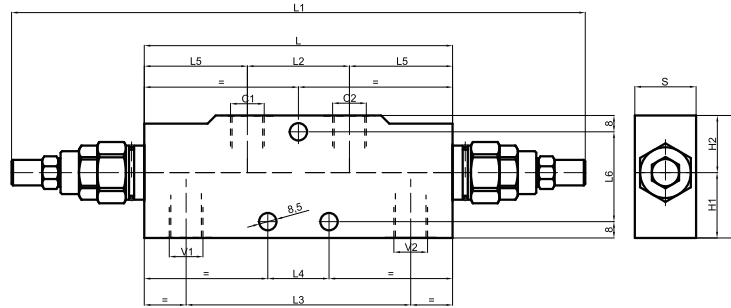
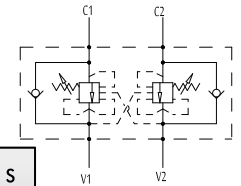


**Double Overcentre Valves
For Centre Closed – Type A**

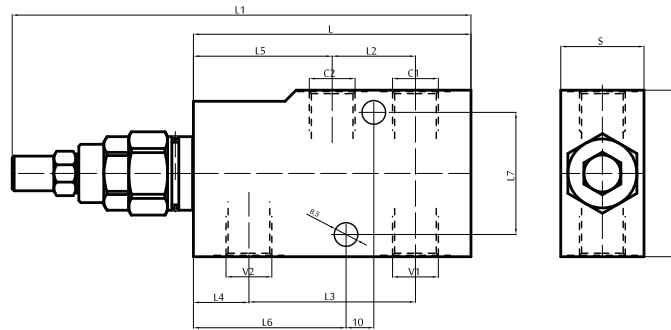


**VBCD
DE A CC**

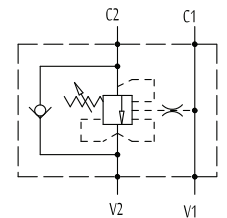


Code Number	Type	Pilot Ratio	Max. Flow	Max..Pressure	V1-V2 C1-C2	L	L1	L2	L3	L4	L5	L6	H	H1	H2	S
			Lt./min	bar	GAS	mm	mm	mm	mm	mm	mm	mm	mm	mm	mm	mm
V0421	VBCD 3/8" DE-A CC	1:4.5	40	350	G 3/8 "	150	282	50	110	30	50	44	60	32	28	30
V0423	VBCD 1/2" DE-A CC	1:4.5	40	350	G 1/2"	150	282	50	110	30	50	44	60	32	28	30

**Single Overcentre Valves
For Centre Closed – Type A**

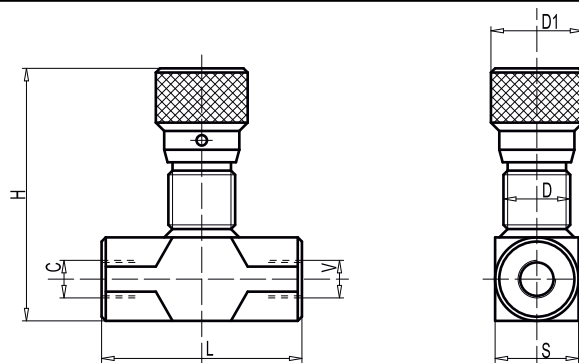


**VBCD SE
A CC**

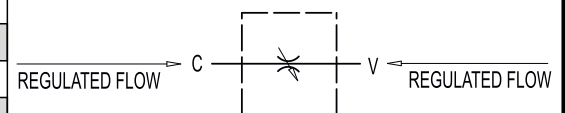
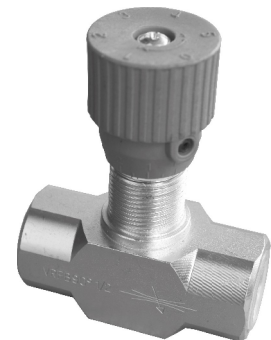


Code Number	Type	Pilot Ratio	Max. Flow	Max..Pressure	V1-V2 C1-C2	L	L1	L2	L3	L4	L5	L6	H	S
			Lt./min	bar	GAS	mm	mm	mm	mm	mm	mm	mm	mm	mm
V0391	VBCD 3/8 " SE-A CC	1:4.5	40	350	G 3/8 "	100	166	30	60	20	50	55	60	30
V0393	VBCD 1/2 " SE-A CC	1:4.5	40	350	G 1/2 "	100	166	30	65	20	50	57,5	60	30

**Flow Regulator Valve
Without Check Valve**



VRFB 90°..



Code Number	Type	Max. Flow	Max. Pressure	L	D	D1	H	S
		Lt./min	Bar	mm	mm	mm	mm	mm
V0584	VRFB 90° 1/4	15	350	60	M22x1,5	32	82	25
V0586	VRFB 90° 3/8	30	350	61	M22x1,5	32	82	25
V0587	VRFB 90° 1/2	50	350	70	M22x1,5	32	87	30
V0589	VRFB 90° 3/4	80	280	89	M35x1,5	42	108	40