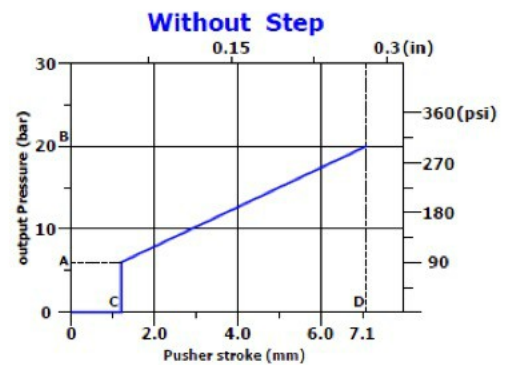
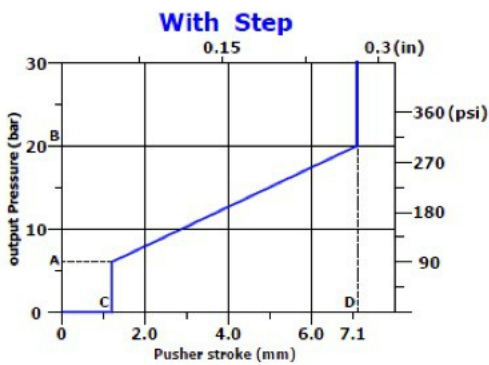


Pressure control curve



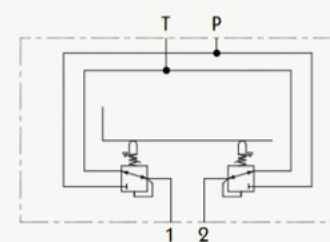
TYPE	Pressure				Stroke			
	A		B		C		D	
	bar	psi	bar	psi	mm	in	mm	in
01	5	72.5	19	275.5	1	0.04	7.1	0.28
02	6	87	25	362.5	1	0.04	7.1	0.28
03	8	116	42	609	0.7	0.028	7.1	0.28
04	1	14.5	9	130.5	1	0.04	7.1	0.28
05	2	29	20.5	297.3	1	0.04	7.1	0.28

Flow	5~20 L/min	1.3~5.3 US gpm
Feeding Pressure	30~100 bar	435~1450 psi
Max.backpressure	3 bar	4.35 psi
Internal leakage at 30 bar/435 psi	10~18 cm ³ /min	0.61~1.1 in ³ /min
Fluid	mineral oil	
Fluid temperature	-10 ~ 80 °C	-14~ 176 °F
Ambient temperature	-40 ~ 60 °C	-40~ 140 °F

Standard threads

PORTS	BSP	UN-UNF	METRIC
Inlet P	G 1/4	7/16-20 (SAE 4)	M12x1.5
A and B ports	G 1/4	7/16-20 (SAE 4)	M12x1.5
Outlet T	G 1/4	7/16-20 (SAE 4)	M12x1.5

Hydraulic Scheme:



HYDRAULIC PILOT CONTROLLER