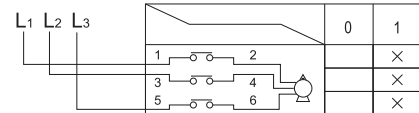
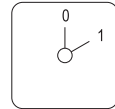


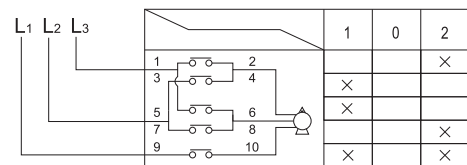
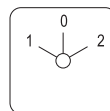
Rotary switches



Type	Scheme	In (A)	Levels	Packing / Box (pcs)	Catalogue number
LW26GS - 20/04	Q11	20	2	1 / 100	492207
LW26GS - 25/04	three-poles switching over; motor starting and stopping; voltage turning on/off to the consumers; possibility for access control	25	2	1 / 100	492257
LW26GS - 32/04		32	2	1 / 72	492327
LW26GS - 63/04		63	2	1 / 64	492637

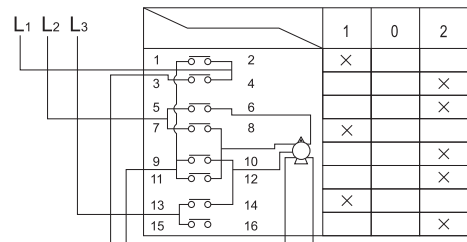
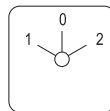


Type	Scheme	In (A)	Levels	Packing / Box (pcs)	Catalogue number
LW26 - 20N	N11 3-position – 2 start positions and 1 stop; for motor reversing	20	3	1 / 100	492202
LW26 - 25N		25	3	1 / 100	492252
LW26 - 32N		32	3	1 / 64	492322
LW26 - 63N		63	3	1 / 48	492632
LW26 - 125N		125	3	1 / 24	492952
LW26 - 160N		160	3	1 / 18	492962



Type	Scheme	In (A)	Levels	Packing / Box (pcs)	Catalogue number
LW26 - 25S	S19	25	4	1 / 100	492253
LW26 - 63S	3-position – 2 start positions and 1 stop; for two speed motor control; switching over between charging*	63	4	1 / 48	492633
LW26 - 125S		125	4	1 / 24	492953
LW26 - 160S		160	4	1 / 18	492963

Note: It is necessary that additional bridges be placed at switching over between charging



Type	Scheme	In (A)	Levels	Packing / Box (pcs)	Catalogue number
LW26 - 25 SD	S21	25	4	1 / 100	492025
LW26 - 63 SD	3-position switching on star/delta	63	4	1 / 48	492063

