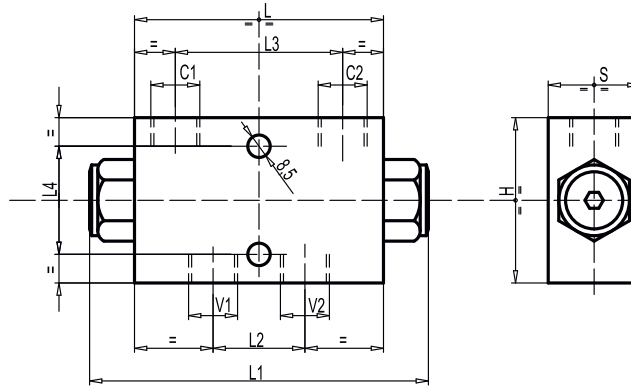
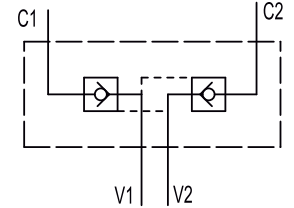
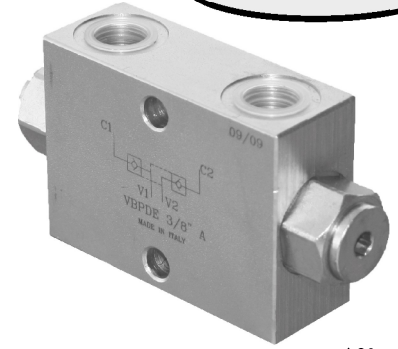


**Double Pilot Operated  
Check Valve – Type A**

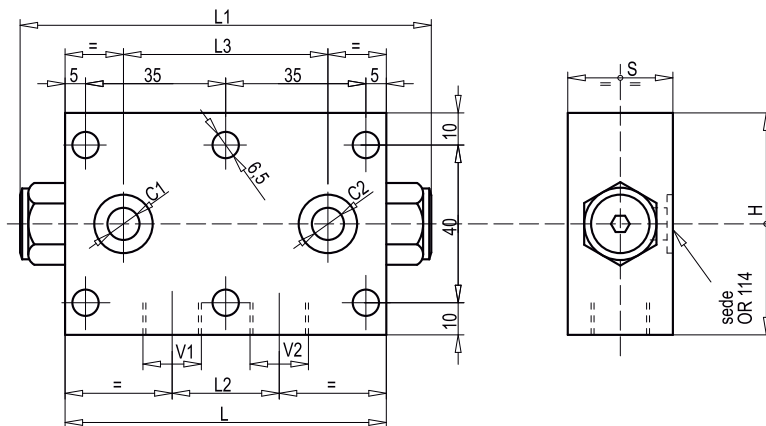


**VBPDE...**

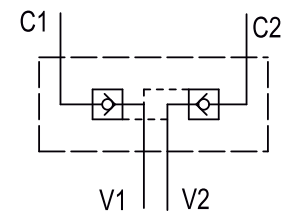
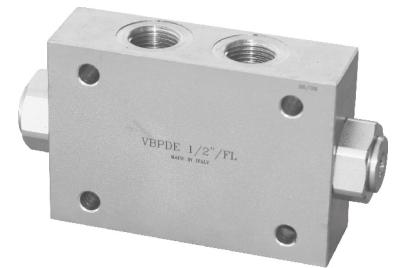


Code Number	Type	Max. Flow	Max. Pressure	L	L1	L2	L3	L4	H	S
		Lt./min	Bar	mm	mm	mm	mm	mm	mm	mm
V0178	VBPDE 1/4 A	20	350	80	113	27	52	44	60	30
V0180	VBPDE 3/8 A	30	350	80	113	30	52	44	60	30
V0190	VBPDE 1/2 A	55	350	115	147	39	80	40	80	35

**Double Pilot Operated  
Check Valve Flangeable**

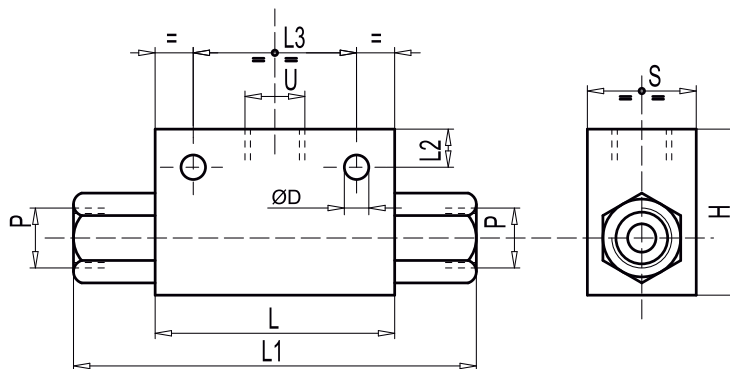


**VBPDE...FL**

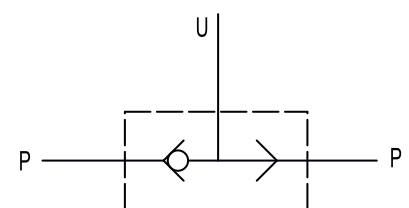
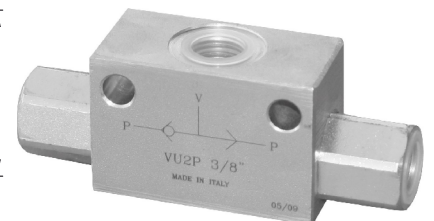


Code Number	Type	Max. Flow	Max. Pressure	L	L1	L2	L3	C1-C2	H	S
		Lt./min	Bar	mm	mm	mm	mm	mm	mm	mm
V0185	VBPDE 3/8 FL	30	350	80	113	30	52	Ø6,5	60	30
V0195	VBPDE 1/2 FL	55	350	115	147	39	81	Ø 11	80	35

**Shuttle Valve**



**VU2P...**



Code Number	Type	Max. Flow	Max. Pressure	L	L1	L2	L3	ØD	H	S
		Lt./min	Bar	mm	mm	mm	mm	mm	mm	mm
V0666	VU2P 1/4	30	450	60	104	9	44	8,5	40	30
V0668	VU2P 3/8	45	450	60	104	9	44	8,5	40	30
V0670	VU2P 1/2	70	450	60	104	12	44	8,5	50	30