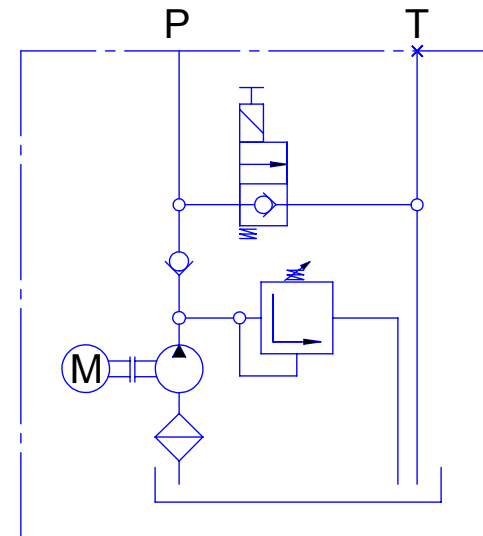


Hydraulic Circuit
P, T = G 3/8



- Poppet valve is without coil
- Poppet valfi bobinsiz takiniz.

ELECTRIC MOTOR

Power: 0.8 kW
Voltage: 12 V DC

PUMP & OIL TANK

Pump displacement: 1.1 cc/rev
Tank Capacity: 4 liter plastic, horizontal

MAX. PRESSURE

P: 150 bar

Notes:

DESIGNED BY	NAME	SIGNATURE	DATE	MATERIAL:

DESCRIPTION	A4
MINI POWER PACK	