

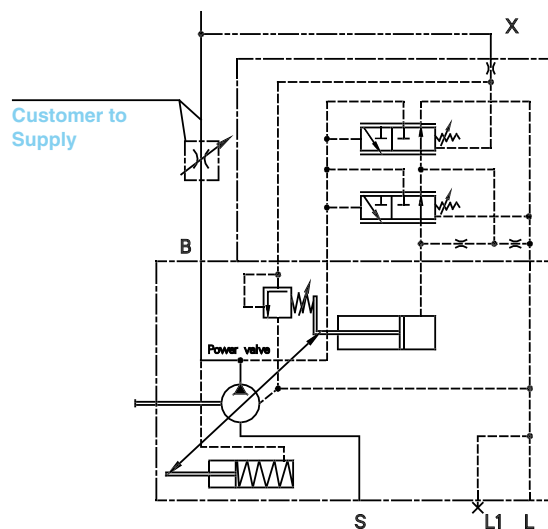
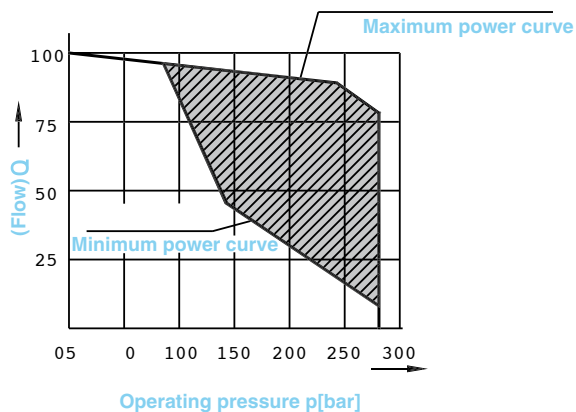
# VARIABLE DISPLACEMENT PUMP H(S)P-10V

## SERIES 31

### DFLR PRESSURE / FLOW / POWER CONTROL

In order to achieve a constant drive torque with a varying operating pressure, the swivel angle and with it the output flow from the axial piston unit is varied so that the product of flow and pressure remain constant.

Flow control is possible below the limit of the power curve.



#### Ports

<b>B</b>	Pressure port
<b>S</b>	Suction port
<b>L, L1</b>	Case drain ports (L1 sealed)
<b>X</b>	Pilot pressure port

The power characteristic is factory - set, so please enter details in clear text, e.g. 20kW at 1450 rpm (5HP, 1800RPM).

### CONTROL DATA

For pressure control technical data see DR Pressure control.

For flow control technical data see DFR control.

Start of control.....from 80 bar (1,160 psi)

Pilot oil consumption.....max. approx. 5.5 L/min (1.45 gpm)