

MOUNTING DIMENSIONS, SIZE 71

SERIES 31

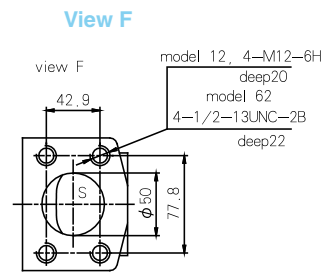
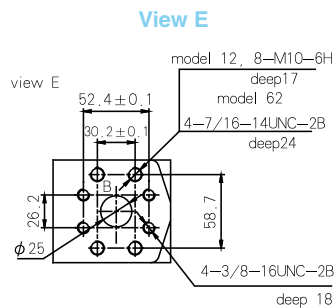
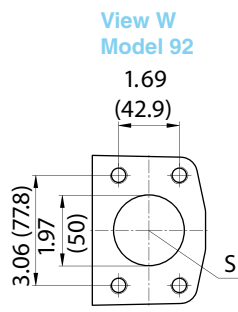
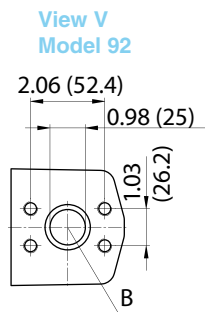
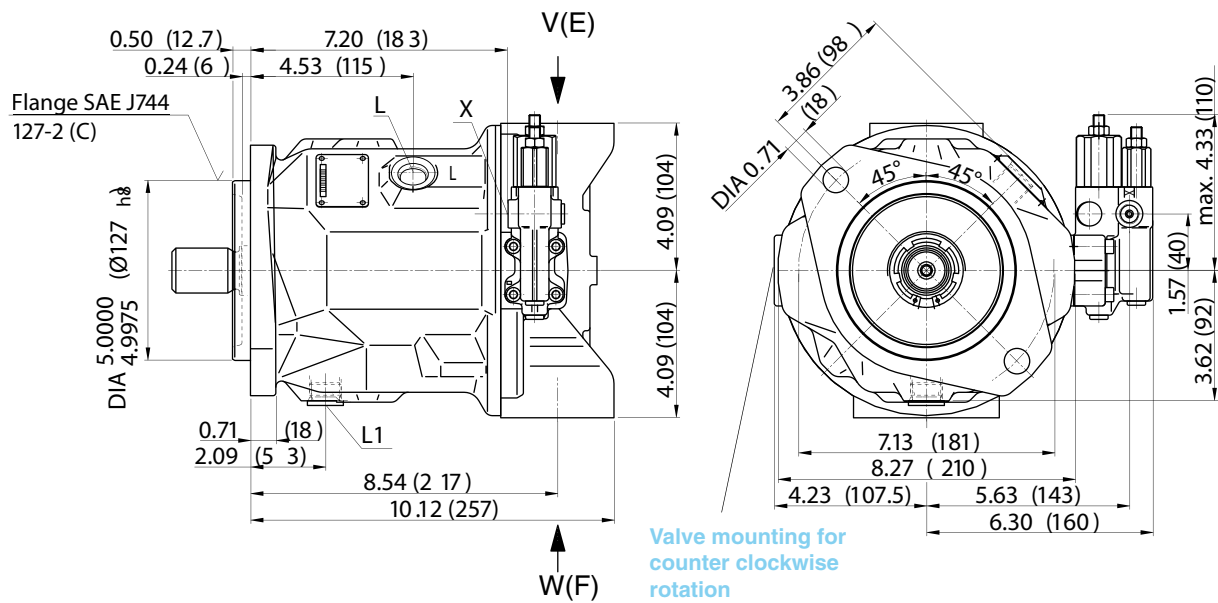
H(S)P-10V71 SHAFT,

SERVICE PORTS ON SIDE AND REAR; NON THROUGH DRIVE

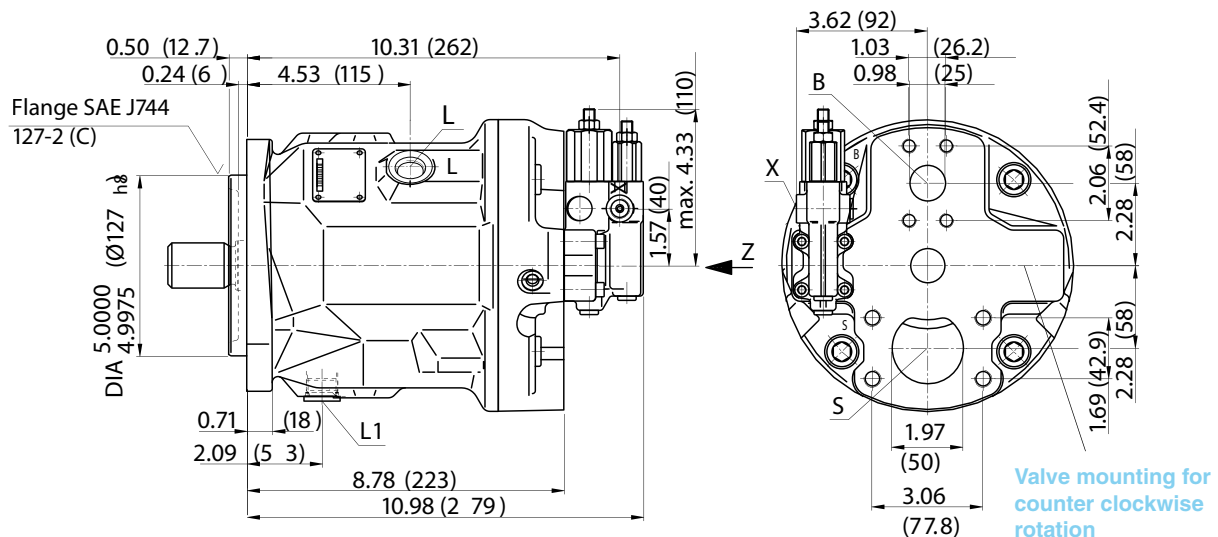
Without Considering Adjustment

DFR/DFR1 Pressure and flow control; clockwise rotation

With port plate 92 (others available)



With port plate 91

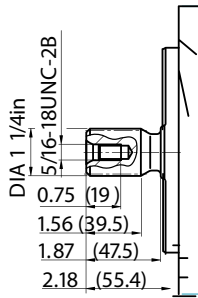


MOUNTING DIMENSIONS, SIZE 71

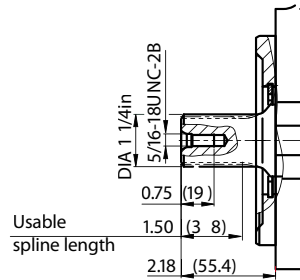
SERIES 31

H(S)P-10V71 SHAFT, METRIC MOUNT, AND PORT DIMENSIONS

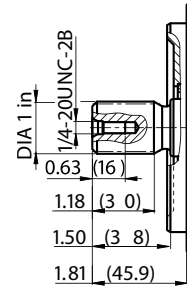
SAE J744- 32-4 (C) 2)



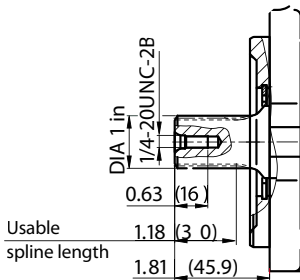
SAE J744- 32-4 (C) 2)



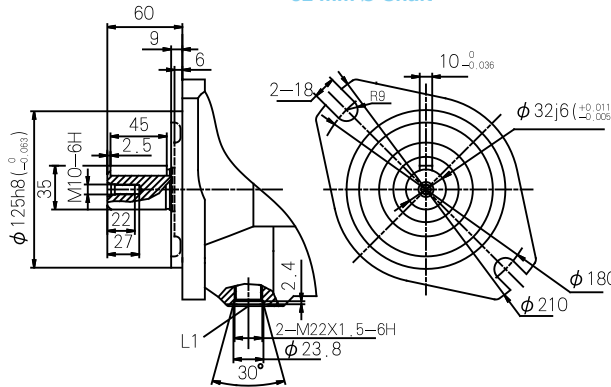
SAE J744- 25-4 (B-B) 2)



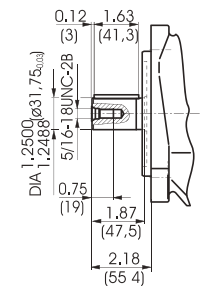
W Splined shaft 1 in 15T 16/32 DP SAE J744- 25-4 (B-B) 2)



Shaft P, ISO Flange A 32 mm Ø Shaft



K Parallel with key ISO 3019-1 32-1



2) ANSI B92.1a-1976, 30° pressure angle, flat root side fit, flank centering, tolerance class 5

Ports H(S)P-10V71

Designation	Port for	Standard	Size	Peak press. [psi (bar)]	Max Tightening Torque [lb-ft (Nm)]	State
B	Service line (standard pressure range) Fixing thread	SAE J518 ISO 68	1 in 3/8-16 UNC-2B; 0.71 (18) deep	5100 (350)	29 (40)	O
S	Inlet (standard pressure range) Fixing thread	SAE J518 ISO 68	2 in 1/2-13 UNC-2B; 0.87 (22) deep	75 (5)	66 (90)	O
L, L ₁	Case drain	ISO 11926	7/8-14 UNF-2B	30 (2)	177 (240)	O ¹⁾
X	Pilot pressure	ISO 11926	7/8-14 UNF-2B; 0.39 (10) deep	5100 (350)	29 (40)	O
X	Control pressure for DG control	DIN 3852	R 1/4 in	1740 (120)	48 (70)	O

1) Dependent on the installation position, port L or L₁ must be connected

O = Must be connected