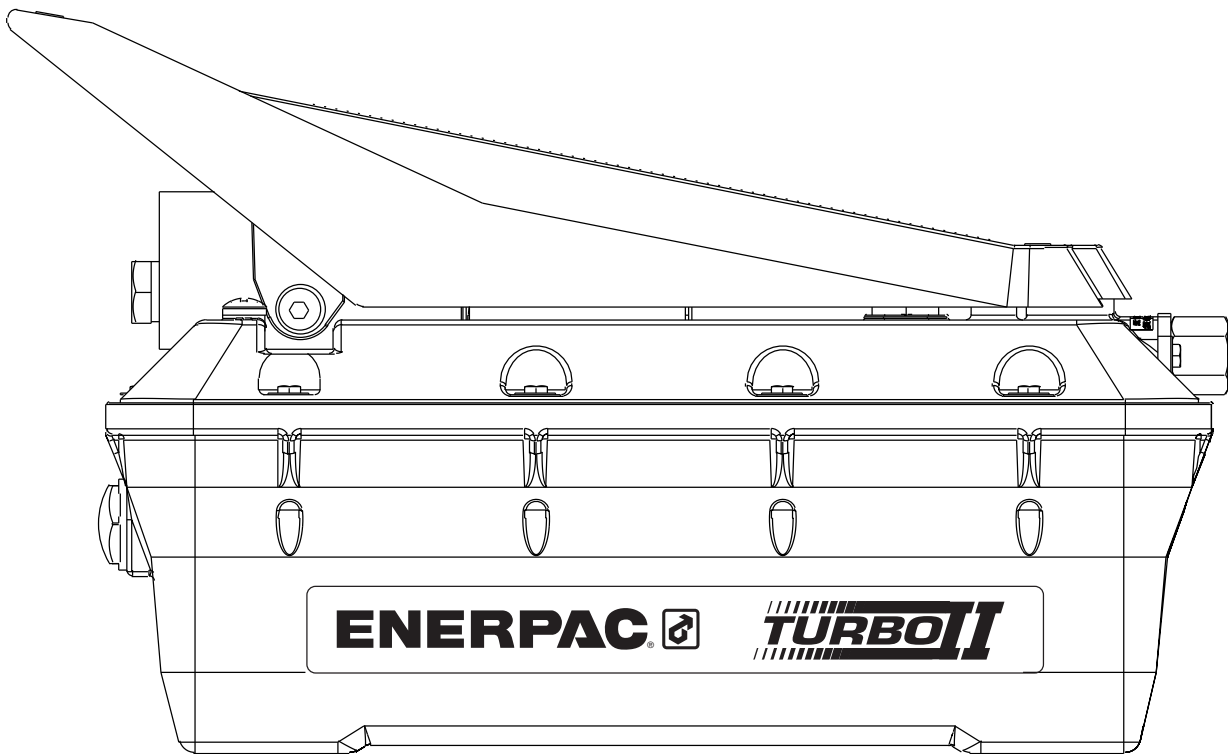


To Protect Your Warranty, Use Only ENERPAC Hydraulic Oil.

Enerpac recommends that all kit components be installed to insure optimum performance of the repaired unit.

NOTE: Storing the pump in the vertical position may cause it to lose its prime. If pump loses its prime:

1. Remove cover.
2. Remove relief valve.
3. Fill chamber with oil
4. Replace relief valve. Apply Loctite 545 to threads and torque to 10–12 ft-lbs. [14–16 Nm]
5. Replace pump cover. See Figure 1 for gasket orientation detail and cover screw torquing sequence.



Contents

Figure 1 — Treadle Assembly, T Version	2	Figure 5 — Release Valve	7
Figure 2 — Cover Assembly	3	Table 1 — Relief Valve Setting	8
Figure 3 — Hydraulic Section Detail	4	Table 2 — Repair Kit Application	8
Figure 4 — Air Motor Assembly	6		

* Turbo II original release starts at Date Code "C".

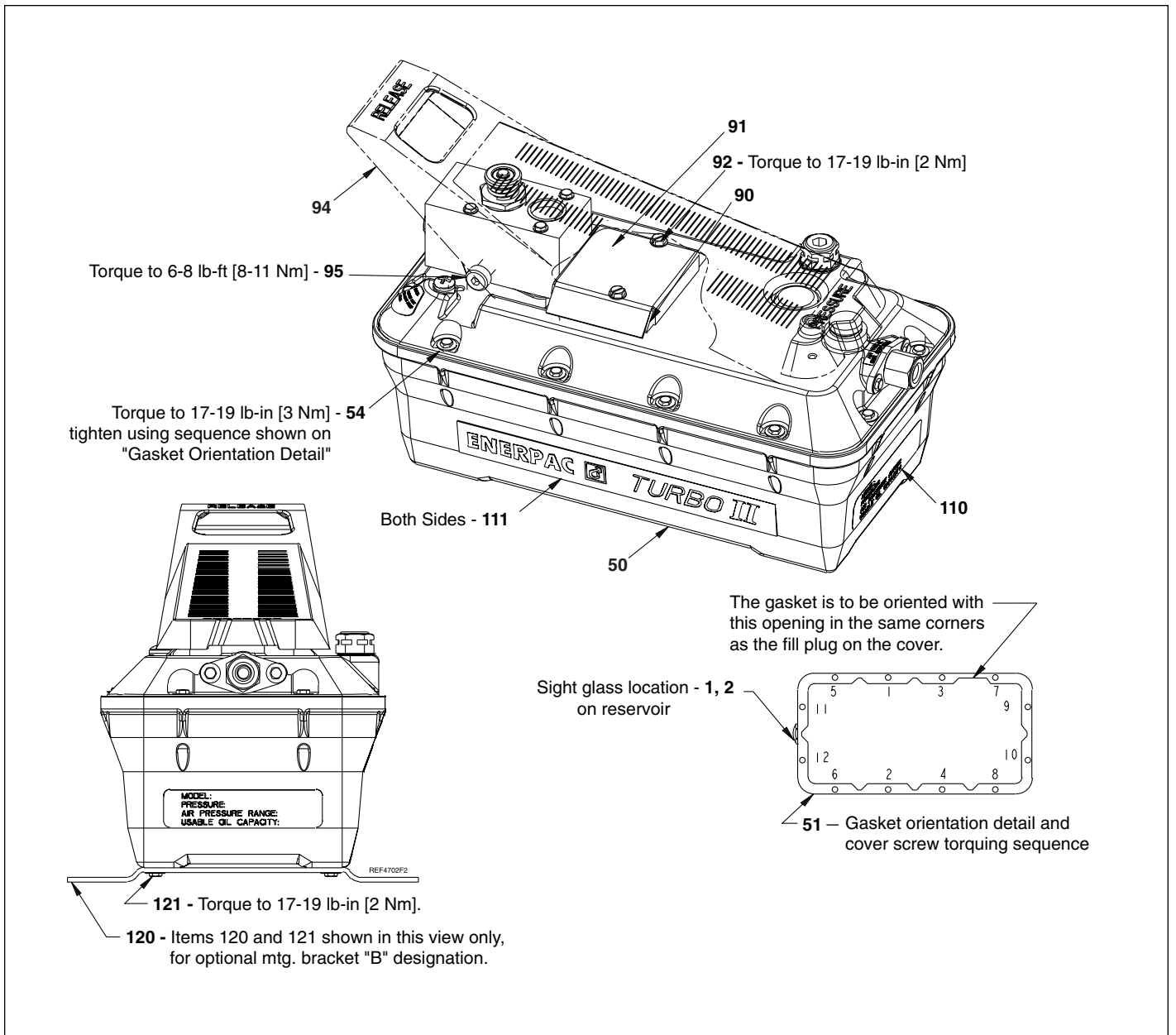


Figure 1

Repair Parts List for Figure 1

Item	Part Number	Qty.	Description	Item	Part Number	Qty.	Description
1	DA12288022	1	Sight Glass	92	DC1523028	2	Slotted Hex Washer Head Scr.
2	★ B1908503	1	O Ring	94	DA4849218	1	Treadle
50	DC4321900SR	1	Reservoir, 2 L, Yellow	95	DA4236242	2	Shoulder Screw
51	★ DC4027167	1	Reservoir Gasket, 2 L	110	DA4296026	1	Model No. Decal
	★ DC714517	1	O-ring Gasket Cover 5 L	111	DC2262026	2	Decal, Enerpac Turbo II Black
54	DA5938028	12	Hi Lo Screw		DC2260026	2	Decal, Enerpac Turbo II White
90	DA8625116	1	Muffler	120	DA5389111	2	Mtg. Bracket
91	DA5690098	1	Muffler Cover	121	DA5938028	4	Hi Lo Screw

★ Items included in Pump Repair Kit, see Table 2 page 8.

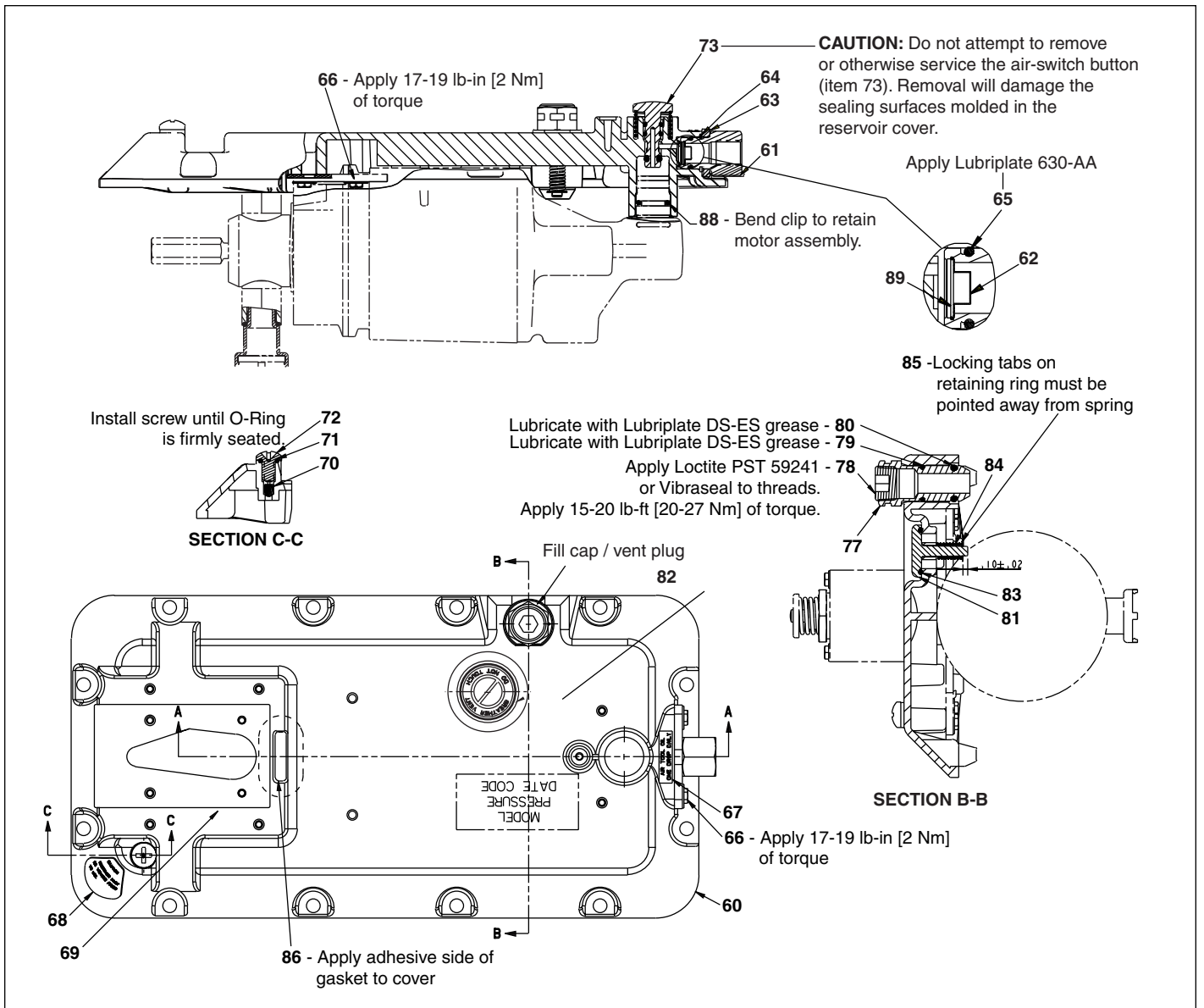
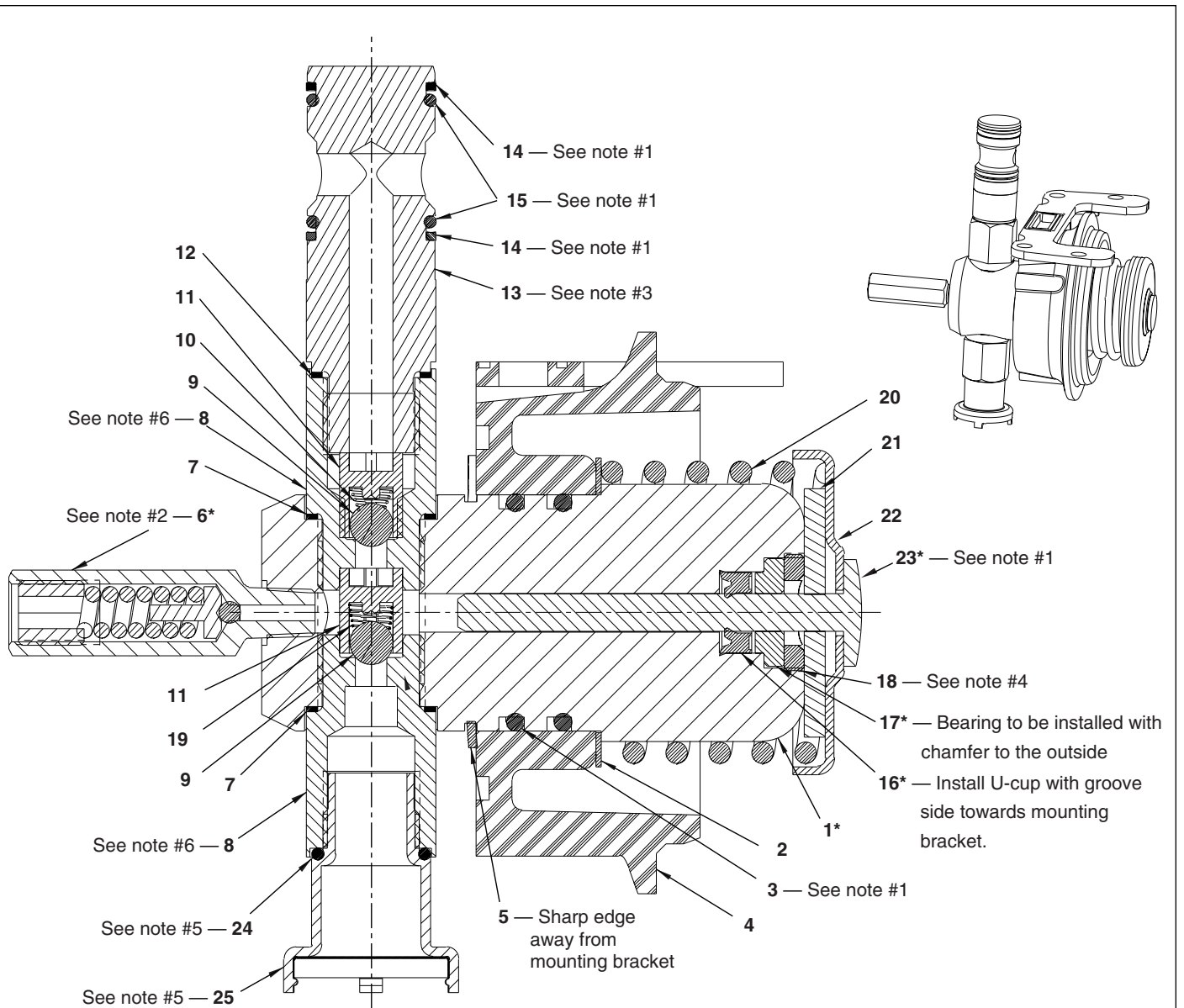


Figure 2

Repair Parts List for Figure 2							
Item	Part Number	Qty.	Description	Item	Part Number	Qty.	Description
60	DC3913900SR	1	Black Cover Assy. (includes 61-87)	73	Not serviceable	1	Air Button
	DC3914900SR	1	Red Cover Assy. (includes 61-87)	77	DA4871118	1	Breather
61	DA5295034	1	Swivel Coupler	78	A1009245	1	3/8 Flush Plug W/Sealant
62	★A8001018SR	1	Filter	79	★DA5349503	1	O Ring (Wear Coated)
63	DA4847799	1	Stamped Bracket	80	★B1010503	1	O Ring
64	DA5026349	1	Ret. Ring	81	DC708440	1	Poppet
65	★B1220503	1	O Ring Ref B839503	82	U972038026-2	1	Breather Vent Decal
66	DA5938028	6	Hi Lo Screw	83	B1224503	1	O Ring Ref J711041
67	U972038026-3	1	Air Tool Oil Decal	84	DC821110	1	Compression Spring
68	DA7931026	1	Caution Decal	85	DC4077160	1	3/16" Retainer
69	★DC4997900K	1	Gasket Set	86	★DA6956037	1	Gasket
70	★DA4390118	1	Filter	88	★DA5521149	1	Retaining Pin
71	★B1005503	1	O Ring	89	★DC5217049	1	Retaining Ring
72	DC1522028	1	Phillips Heads Screw				

★ Items included in Pump Repair Kit, see Table 2 page 8.



Notes:

* See Repair Parts List.

1. Lubricate seals with moderate amount of DS-ES grease.
2. Apply Loctite 545 on threads, and apply 10—12 lb-ft [14-16 Nm] of torque to item #6.
3. Apply a 1/2 bead of Loctite 243 on threads and apply 34—41 lb-ft [46-55 Nm] of torque to item #13
4. Apply one drop of Loctite 242 on threads, and apply 16—18 lb-ft [22-24 Nm] of torque to item #18
5. Items #24 and #25 are installed finger tight
6. Apply a 1/2 bead of Loctite 243 on threads and apply 38-45 lb-ft of torque to item #8.

Figure 3

Repair Parts List for Figure 3

Item	Part Number	Qty.	Description	Item	Part Number	Qty.	Description
1*	E972540030	1	Hydraulic Cylinder, 1000 bar vers.	15	★ B1016803	2	O-Ring – Global
2	DA4298108	1	Washer	16*	★ DA2232041	1	U-Cup, 1000 bar version
3	★ B1258503	2	O-Ring	17*	★ E972540108	1	Bearing, 1000 bar:
4	DA4287111	1	Mtg. Bracket	18*	★ DA1204044	1	Bearing Retainer 1000 bar
5	DA4343044	1	Bowed Ret. Ring	19	★ DA6911210	1	Conical Spring
6*	E972540900	1	Press Relief Valve	20	DA4285110	1	Spring
7	★ DA3811167	2	Copper Gasket	21	DA6600108	1	Rubber Washer 10 KSI
8	DC283290SR	2	Seat	22	DA4284108	1	Spring Washer, Turbo, 10 KSI
9	★ B1007016	2	1/4" Dia. Ball		DA9281108	1	Spring Washer, Turbo, 3 KSI
10	★ DA4874110	1	Conical Spring		DA4628108	1	Spring Washer, Turbo, 5 KSI
11	★ DA3682013	2	Ball Guide	23*	E972540040	1	Plunger 1000 bar
12	★ DC170167	1	Copper Gasket	24	★ B1221503	1	O-ring, Ref C403503
13	DC5268SR	1	Pressure Tube 10 KSI	25	DC442900	1	Intake Valve Assy.
14	★ DA4974367	2	Backup Ring				

★ Items included as part of Repair Kits: (E972540K).
 Also included in complete Pump Repair Kit, see Table 2, page 8.

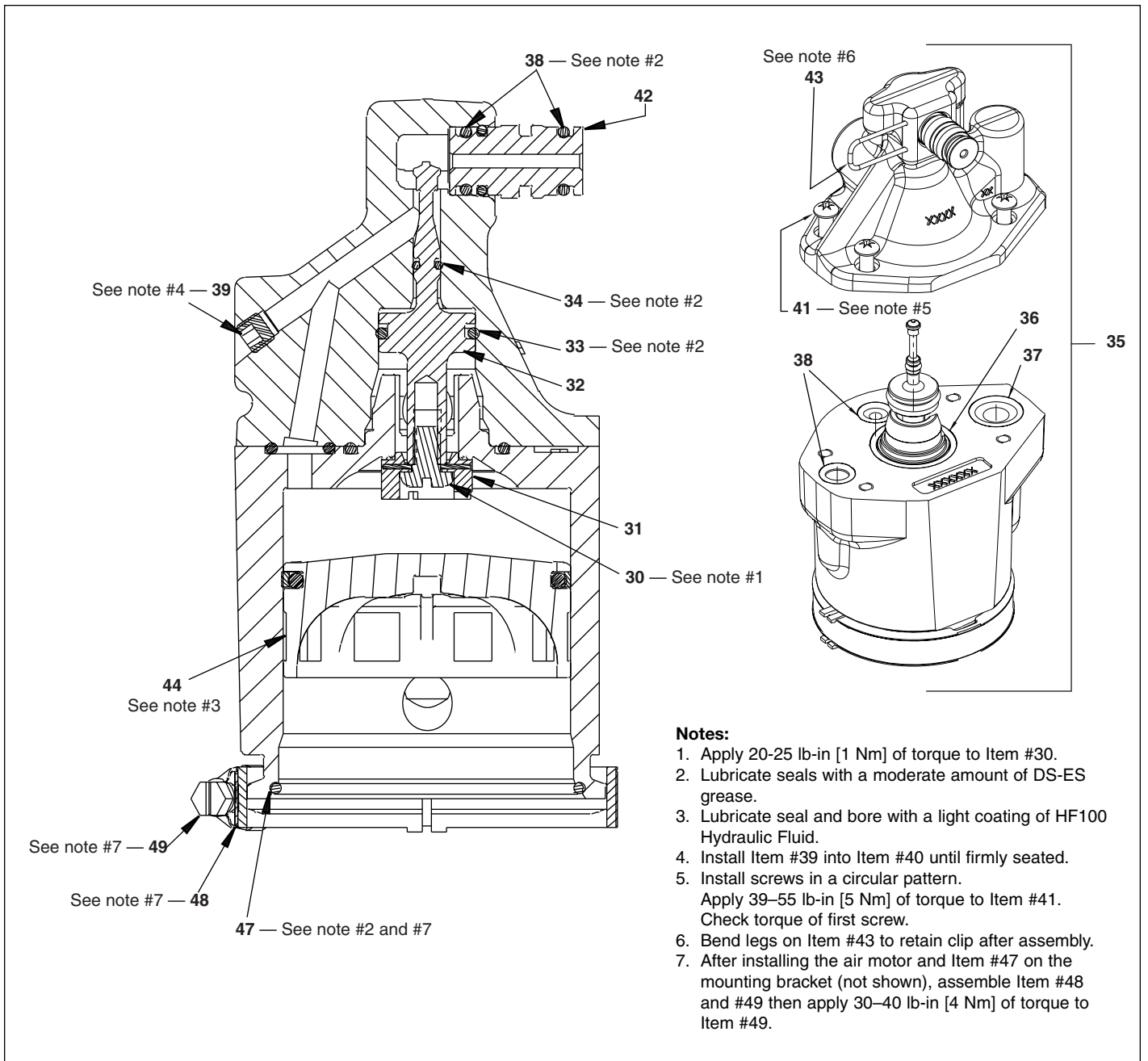


Figure 4

Repair Parts List for Figure 4							
Item	Part Number	Qty.	Description	Item	Part Number	Qty.	Description
30	★ DA7085028	1	Screw – .250-20 Special	39	A1006245	1	1/16 Flush Plug w/Sealant
31	★ DA3706120	1	B/U Washer	41	DC2261628	4	Screw, Torx (.25-20 x .75 lg.)
32	★ DC2234051	1	Piston	42	DC2182099	1	Extension Fitting, Air Motor
33	★ B1013503	1	O-Ring	43	★ DA5521149	1	Retaining Pin
34	★ B1001503	1	O-Ring (.12 x .25 x .06)	44	DA4122051SR	1	Air Motor Piston Assembly
35	DC2200900SR	1	Air Motor, Complete	47	★ B1282503	1	O-Ring
36	★ B1260503	1	O-Ring	48	DA2687111	2	Clamp Brk.
37	★ B1014503	1	O-Ring Ref M760041	49	DA2686299	1	Hose Clamp
38	★ B1009503	4	O-Ring Ref K1041				

★ Items included in and available only as part of Repair Kit DC2234900SR.
Also included in complete Pump Repair Kit, see Table 2 page 8.

Notes:

1. Torque Item #19 to 82-88 lb-ft [112-120 Nm] with threads lubricated.
2. Torque Item #11 to 17-19 lb-in [2 Nm].
3. Lubricate all seals and mating surfaces w/DS-ES Grease prior to assembly unless otherwise noted.
4. Prior to assembling Item #6 seat, coin seat with a \varnothing .219 ball to a force of 95-105 lbs. [444 N].

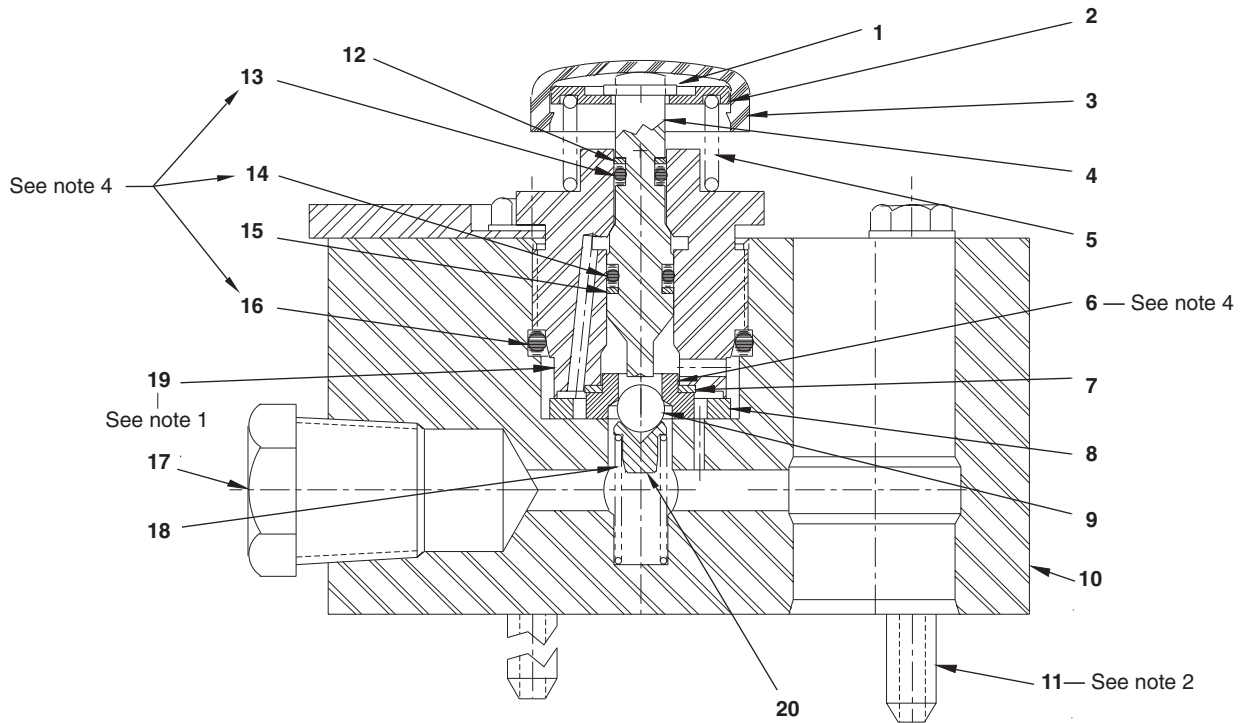


Figure 5

Repair Parts List for Figure 5

Item	Part Number	Qty.	Description	Item	Part Number	Qty.	Description
1	★ DA5025349	1	Ret. Ring	11	DA4294028	4	Thd. Form Screw
2	DA4848108	1	Spring Washer	12	★ B1006564	1	B/U Washer
3	★ DA4831020	1	Cap	13	★ B1001503	1	O-Ring (.12 x .25 x .06)
4	DA4832040	1	Release Plunger	14	★ B1003503	1	O-Ring (.19 x .31 x .06) BUNA
5	★ DA6971110	1	Spring	15	★ B1008564	1	Back-up Washer
6	★ CB581290	1	Ball Seat	16	★ B1118903	1	O-Ring
7	★ P20037	1	Gasket	17	R515245-2	1	Plug
8	★ CL344167	1	Gasket	18	★ CJ656110	1	Spring
9	★ B1006016	1	7/32" Dia. Ball	19	DA4872013	1	Release Guide
10	DA4833190	1	Manifold	20	★ DA7572013	1	Ball Guide

★ Items included in and available only as part of Repair Kit DA4836900K1. Also included in complete Pump Repair Kit, see Table 2 page 8.

Table 1 - Relief Valve Settings

Pump Model	Pressure Rating	Relief Valve Pressure Setting
PATG	14,100 psi	14,100 to 14,250 psi

For standard models with special pressure settings, the model number will have a “dash” followed by 4 more digits to indicate the pressure setting.

To determine the pressure settings locate the model number stamp. The model number will be in the format PAYYYYYY-XXXX, where XXXX is the maximum pressure rating. The relief valve should be set from (XXXX + 250 psi to (XXXX) + 750 psi).

Table 2 - Repair Kit Application

Pump Model	Recommended Repair Kit
PATG9102NE012	PATG9102NE012K

Enerpac Worldwide Locations

Africa

ENERPAC Middle East FZE
P.O. Box 18004
Jebel Ali, Dubai
United Arab Emirates
Tel: +971 (0)4 8872686
Fax: +971 (0)4 8872687

Australia

ENERPAC, Actuant Australia Ltd.
Block V Unit 3, Regents Park Estate
391 Park Road
Regents Park NSW 2143
(P.O. Box 261) Australia
Tel: +61 297 438 988
Fax: +61 297 438 648

Brazil

Power Packer do Brasil Ltda.
Rua dos Inocentes, 587
04764-050 - Sao Paulo (SP)
Tel: +55 11 5687 2211
Fax: +55 11 5686 5583
Toll Free in Brazil:
Tel: 0800 891 5770
vendasbrasil@enerpac.com

Canada

Actuant Canada Corporation
6615 Ordan Drive, Unit 14-15
Mississauga, Ontario L5T 1X2
Tel: +1 905 564 5749
Fax: +1 905 564 0305
Toll Free:
Tel: +1 800 268 4987
Fax: +1 800 461 2456

Technical Inquiries:

techservices@enerpac.com

China

Actuant China Ltd.
1F, 269 Fute N. Road
Waigaoqiao Free Trade Zone
Pudong New District
Shanghai, 200 131 China
Tel: +86 21 5866 9099
Fax: +86 21 5866 7156

Actuant China Ltd. (Beijing)

709A Xin No. 2
Diyang Building
Dong San Huan North Rd.
Beijing City, 100028 China
Tel: +86 10 845 36166
Fax: +86 10 845 36220

Central and Eastern Europe

ENERPAC B.V.
Galvanistraat 115
P.O. Box 8097, 6710 AB Ede
The Netherlands
Tel: +31 318 535 936
Fax: +31 318 535 951

France

ENERPAC Une division de
ACTUANT France s.a.
B.P. 200
Parc d'Activités
du Moulin de Massy
F-91882 Massy CEDEX France
Tel: +33 1 601 368 68
Fax: +33 1 692 037 50

◆ **e-mail:** info@enerpac.com

Germany, Austria, Szwitzerland, Russia, Greece and CIS (excl. Caspian Sea Countries) ENERPAC Applied Power GmbH

P.O. Box 300113
D-40401 Düsseldorf
Germany
Tel: +49 211 471 490
Fax: +49 211 471 49 28

India

ENERPAC Hydraulics (India) Pvt. Ltd.
Office No. 9,10 & 11,
Plot No. 56, Monarch Plaza,
Sector 11, C.B.D. Belapur
Navi Mumbai 400614, India
Tel: +91 22 2756 6090
Tel: +91 22 2756 6091
Fax: +91 22 2756 6095

Italy

ENERPAC S.p.A.
Via Canova 4
20094 Corsico (Milano)
Tel: +39 02 4861 111
Fax: +39 02 4860 1288

Japan

Applied Power Japan Ltd.
1-1-11, Shimomae
Toda-shi
Saitama Pref.
Japan 335-0016
Tel: +81 484 30 1055
Fax: +81 484 30 1066

The Netherlands, Belgium, Luxembourg, Sweden, Denmark, Norway, Finland, Baltic States

ENERPAC B.V.
Galvanistraat 115
P.O. Box 8097, 6710 AB Ede
The Netherlands
Tel: +31 318 535 911
Tel: +31 318 525 613
+31 318 535 848

Technical Inquiries Europe:

techsupport.europe@enerpac.com

Singapore

Enerpac Asia Pte. Ltd.
25 Serangoon North Ave. 5
#03-01 Keppel Digihub
Singapore 554914
Thomson Road
P.O. Box 114
Singapore 915704
Tel: +65 64 84 5108
+65 64 84 3737
1800 363 7722
Fax: +65 64 84 5669

Technical Inquiries:

sales@enerpac.com.sg

South Korea

Actuant Korea Ltd.
3Ba 717, Shihwa Industrial
Complex, Jungwang-Dong,
Shihung-Shi, Kyunggi-Do
Republic of Korea 429-450
Tel: +82 31 434 4506
Fax: +82 31 434 4507

◆ **internet:** www.enerpac.com

Spain, Portugal

ENERPAC
C/San José Artesano 8
Pol. Ind.
28108 Alcobendas
(Madrid) Spain
Tel: +34 91 661 11 25
Fax: +34 91 661 47 89

Middle East, Turkey , Caspian Sea

ENERPAC Middle East FZE
P.O. Box 18004
Jebel Ali, Dubai
United Arab Emirates
Tel: +971 (0)4 8872686
Fax: +971 (0)4 8872687

United Kingdom, Ireland

ENERPAC Ltd., P.O. Box 33
New Romney, TN28 8QF
United Kingdom
Tel: +44 1527 598 900
Fax: +44 1527 585 500

USA, Latin America and Caribbean

ENERPAC
P.O. Box 3241
6100 N. Baker Road
Milwaukee, WI 53209 USA
Tel: +1 262 781 6600
Fax: +1 262 783 9562

User inquiries:

+1 800 433 2766

Distributor inquiries/orders:

+1 800 558 0530

Technical Inquiries:

techservices@enerpac.com

All Enerpac products are guaranteed against defects in workmanship and materials for as long as you own them. For your nearest authorized Enerpac Service Center, visit us at www.enerpac.com