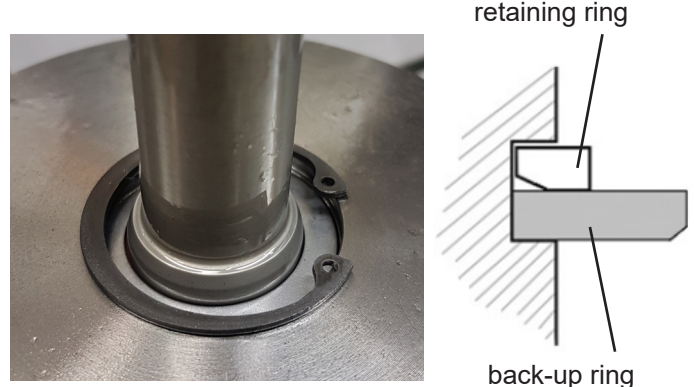


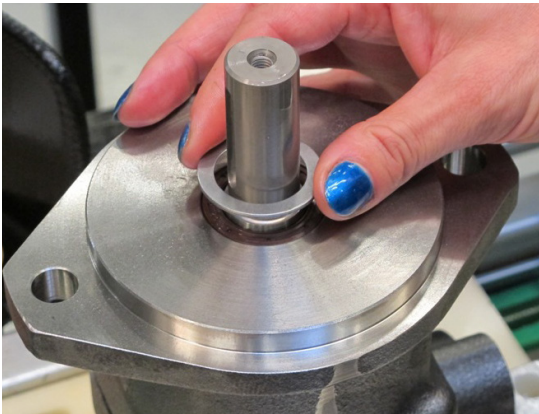
## Assembling



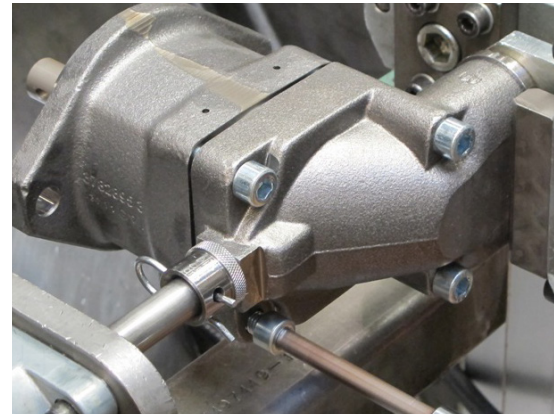
19. Carefully push down the shaft seal.



22. Assemble the retaining ring. Make sure the chamfer is downwards.



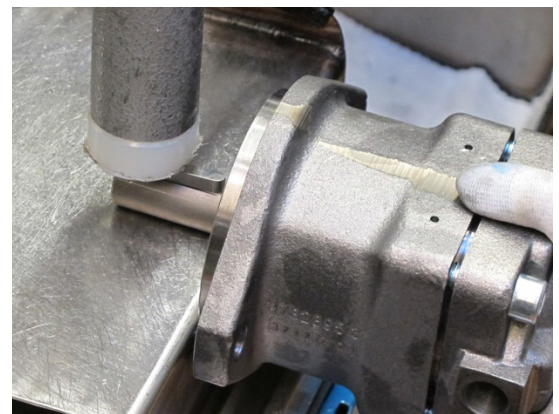
20. Place the support ring with the radius against the dust lip on the shaft seal.



23. Assemble the hexagon screws and torque them to specified value, shown on page 12.



21. Carefully tap down shaft seal and support ring.



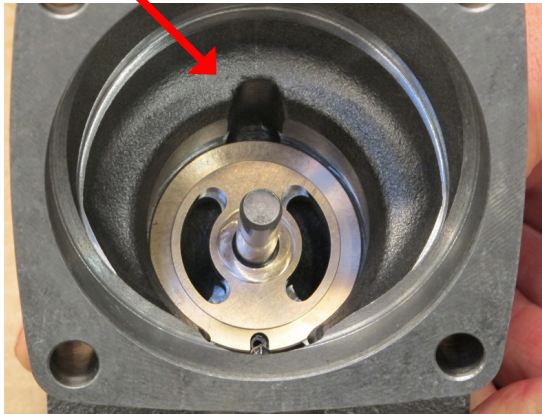
24. Tap down the flat key and turn the shaft at least one revolution. Make sure the back-lash of the gears are correct (see page 12).

### Barrel retaining ring



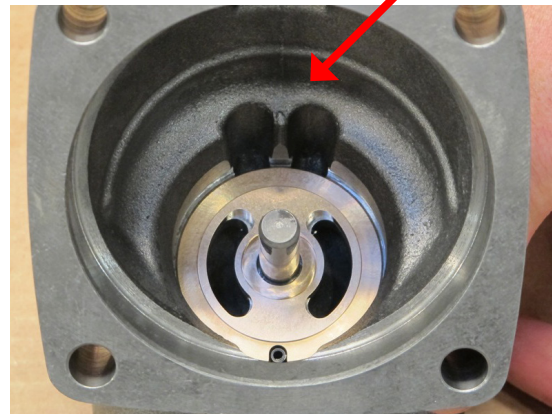
1. Assemble the barrel retaining ring. Note, grooves upwards as on picture.

One groove

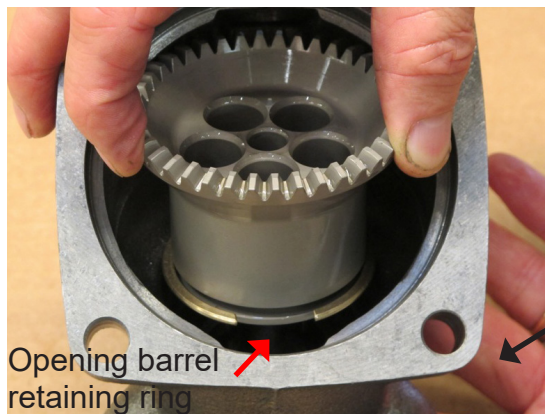


2. When the barrel housing have one groove assemble the cylinder barrel as shown in picture 3.

Two grooves



4. When the barrel housing have two grooves assemble the cylinder barrel as shown in picture 5.



3. Assemble the cylinder barrel as shown in picture.

Connection ports A and B



5. Assemble the cylinder barrel as shown in picture.